

# Recombinant Mouse Tspo Full Length Transmembrane protein, His-tagged

**Cat. No.** Tspo-2404M    **Lot. No.** (See product label)

## SPECIFICATION

<b>Product Overview</b>	Recombinant Mouse Tspo protein(P50637)(1-169aa), fused to N-terminal His tag, was expressed in E. coli.
<b>Species</b>	Mouse
<b>Source</b>	E.coli
<b>ProteinLength</b>	1-169aa
<b>Form</b>	If the delivery form is liquid, the default storage buffer is Tris/PBS-based buffer, 5%-50% glycerol. If the delivery form is lyophilized powder, the buffer before lyophilization is Tris/PBS-based buffer, 6% Trehalose, pH 8.0.
<b>Molecular Mass</b>	21.7 kDa
<b>AA Sequence</b>	MPESWVPAVGLTLVPSLGGFMGAYFVRGEGLRWYASLQKPSWHPPRWTLAPIWG TLYSAMGYGSYIVWKELGGFTEDAMVPLGLYTGQLALNWAWPPPIFFGARQMGWAL ADLLLVSQVATATTLAWHRVSPPAARLLYPYLAFLAFATVLNYYVWRDNSGRRGGS RLPE
<b>Purity</b>	Greater than 85% as determined by SDS-PAGE.
<b>Storage</b>	Store at -20°C/-80°C upon receipt, aliquoting is necessary for mutiple use. Avoid

 Tel: 1-631-559-9269    1-516-512-3133

 Email: [info@creative-biomart.com](mailto:info@creative-biomart.com)     Fax: 1-631-938-8127

 45-1 Ramsey Road, Shirley, NY 11967, USA

repeated freeze-thaw cycles.

**Reconstitution**

Please reconstitute protein in deionized sterile water to a concentration of 0.1-1.0 mg/mL. We recommend to add 5-50% of glycerol (final concentration) and aliquot for long-term storage at -20°C/-80°C. Our default final concentration of glycerol is 50%.

**GENE INFORMATION****Gene Name**

Tspo translocator protein [ *Mus musculus* ]

**Official Symbol**

Tspo

**Synonyms**

TSPO; translocator protein; PKBS; isoquinoline-binding protein; benzodiazepine receptor, peripheral; mitochondrial benzodiazepine receptor; peripheral-type benzodiazepine receptor; IBP; PBR; Bzrp; Tspo1;

**Gene ID**

12257

**mRNA Refseq**

NM\_009775

**Protein Refseq**

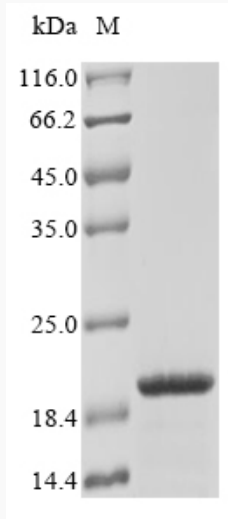
NP\_033905

 Tel: 1-631-559-9269 1-516-512-3133

 Email: [info@creative-biomart.com](mailto:info@creative-biomart.com)  Fax: 1-631-938-8127

 45-1 Ramsey Road, Shirley, NY 11967, USA

**SDS-PAGE**



 Tel: 1-631-559-9269 1-516-512-3133

 Email: [info@creative-biomart.com](mailto:info@creative-biomart.com)  Fax: 1-631-938-8127

 45-1 Ramsey Road, Shirley, NY 11967, USA