

## Recombinant Mouse Twist1 protein, His-KSI-tagged

Cat. No. Twist1-6250M Lot. No. (See product label)

### SPECIFICATION

|                         |  |
|-------------------------|--|
| <b>Product Overview</b> | Recombinant Mouse Twist1 protein(P26687)(1-206aa), fused with N-terminal His and KSI tag, was expressed in E.coli.   |
| <b>Species</b>          | Mouse  |
| <b>Source</b>           | E.coli   |
| <b>ProteinLength</b>    | 1-206aa  |
| <b>Form</b>             | If the delivery form is liquid, the default storage buffer is Tris/PBS-based buffer, 5%-50% glycerol. If the delivery form is lyophilized powder, the buffer before lyophilization is Tris/PBS-based buffer, 6% Trehalose, pH 8.0.   |
| <b>Molecular Mass</b>   | 36.5 kDa   |
| <b>Purity</b>           | Greater than 85% as determined by SDS-PAGE.  |
| <b>Storage</b>          | Store at -20°C/-80°C upon receipt, aliquoting is necessary for mutiple use. Avoid repeated freeze-thaw cycles.   |
| <b>Reconstitution</b>   | We recommend that this vial be briefly centrifuged prior to opening to bring the contents to the bottom. Please reconstitute protein in deionized sterile water to a concentration of 0.1-1.0 mg/mL. We recommend to add 5-50% of glycerol (final concentration) and aliquot for long-term storage at -20°C/-80°C. |

 Tel: 1-631-559-9269 1-516-512-3133

 Email: [info@creative-biomart.com](mailto:info@creative-biomart.com)  Fax: 1-631-938-8127

 45-1 Ramsey Road, Shirley, NY 11967, USA

**AA Sequence**

MMQDVSSSPVSPADDSLSNSEEEPDRQQPASGKRGARKRRSSRRSAGGSAGPGG  
 ATGGGIGGGDEPGSPAQQKRGKKSAGGGGGGGAGGGGGGGSSSGGGSPQS  
 YEELQTQRVMANVRERQRTQSLNEAFAALRKIIPTLPSDKLSKIQTLKLAARYIDFLYQ  
 VLQSDDELDSKMASCSYVAHERLSYAFSVWRMEGAWSMSASH

**GENE INFORMATION**

**Gene Name** [Twist1 twist homolog 1 \(Drosophila\) \[ Mus musculus \]](#)

**Official Symbol** [Twist1](#)

**Synonyms** TWIST1; twist homolog 1 (Drosophila); twist-related protein 1; Pluridigite; charlie chaplin; polydactyly EMS; Ska< sup> m10Jus< /sup> twist gene homolog 1; Pde; pdt; Ska10; Twist; M-Twist; bHLHa38; AA960487; m10Jus> MGC103391;

**Gene ID** [22160](#)

**mRNA Refseq** [NM\\_011658](#)

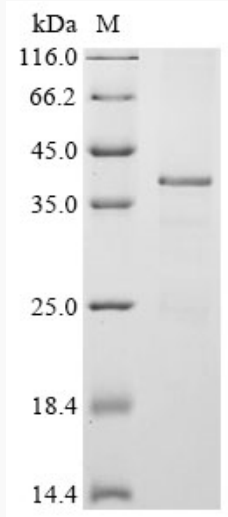
**Protein Refseq** [NP\\_035788](#)

 Tel: 1-631-559-9269 1-516-512-3133

 Email: [info@creative-biomart.com](mailto:info@creative-biomart.com)  Fax: 1-631-938-8127

 45-1 Ramsey Road, Shirley, NY 11967, USA

**SDS-PAGE**



 Tel: 1-631-559-9269 1-516-512-3133

 Email: [info@creative-biomart.com](mailto:info@creative-biomart.com)  Fax: 1-631-938-8127

 45-1 Ramsey Road, Shirley, NY 11967, USA