

Active Recombinant Full Length Human UBA1 Protein, GST-tagged

Cat. No. UBA1-641H Lot. No. (See product label)

SPECIFICATION

| | |
|-------------------------|---|
| Product Overview | Recombinant Human UBA1 fused with GST tag at N-terminal was expressed in Insect cells. |
| Species | Human |
| Source | Insect Cells |
| ProteinLength | 1-1058 a.a. |
| Description | Ubiquitin-activating enzyme 1 (UBA1) catalyzes the first step in ubiquitin conjugation to mark cellular proteins for degradation through the ubiquitin-proteasome system. UBA1 activates ubiquitin by first adenylating its C-terminal glycine residue with ATP, and thereafter linking this residue to the side chain of a cysteine residue in E1, yielding a ubiquitin-E1 thioester and free AMP. Posttranslational modification by ubiquitin or ubiquitin-like proteins regulates numerous processes, including cell division, immune responses and embryonic development. |
| Form | 50mM Tris-HCl, pH 7.5, 150mM NaCl, 10mM glutathione, 0.1mM EDTA, 0.25mM DTT, 0.1mM PMSF, 25% glycerol |
| Bio-activity | 110 nmol/min/mg |
| Molecular Mass | 145 kDa |

 Tel: 1-631-559-9269 1-516-512-3133

 Email: info@creative-biomart.com  Fax: 1-631-938-8127

 45-1 Ramsey Road, Shirley, NY 11967, USA

| | |
|-------------------------|---|
| Purity | >95% |
| Applications | Ubiquitin Enzyme Assay, Western Blot |
| Stability | 1 year at - 70 centigrade from the date of shipment. |
| Storage | Store product at –70 centigrade. For optimal storage, aliquot target into smaller quantities after centrifugation and store at recommended temperature. For most favorable performance, avoid repeated handling and multiple freeze/thaw cycles. |
| Concentration | 0.1 ug/ml |
| GENE INFORMATION | |
| Gene Name | UBA1 ubiquitin-like modifier activating enzyme 1 [Homo sapiens] |
| Official Symbol | UBA1 |
| Synonyms | UBA1; ubiquitin-like modifier activating enzyme 1; A1S9T, GXP1, UBE1, ubiquitin activating enzyme E1 , ubiquitin activating enzyme E1 (A1S9T and BN75 temperature sensitivity complementing); ubiquitin-like modifier-activating enzyme 1; POC20; POC20 centriolar protein homolog (Chlamydomonas); ubiquitin activating enzyme E1 homolog (yeast); UBE1X; POC20 centriolar protein homolog; UBA1, ubiquitin-activating enzyme E1 homolog A; A1S9T and BN75 temperature sensitivity complementing; A1S9; A1ST; GXP1; UBE1; A1S9T; AMCX1; SMAX2; UBA1A; MGC4781; |
| Gene ID | 7317 |
| mRNA Refseq | NM_003334 |

 Tel: 1-631-559-9269 1-516-512-3133

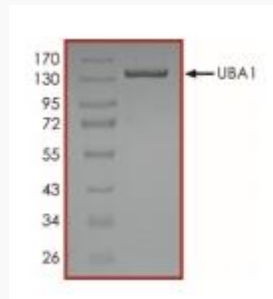
 Email: info@creative-biomart.com  Fax: 1-631-938-8127

 45-1 Ramsey Road, Shirley, NY 11967, USA

Protein Refseq NP_003325

MIM 314370

UniProt ID P22314



 Tel: 1-631-559-9269 1-516-512-3133

 Email: info@creative-biomart.com  Fax: 1-631-938-8127

 45-1 Ramsey Road, Shirley, NY 11967, USA