

Recombinant Human UBA6 Protein, GST-tagged

Cat. No. UBA6-4225H **Lot. No.** (See product label)

SPECIFICATION

Product Overview	Human FLJ10808 full-length ORF (AAH31637, 1 a.a. - 389 a.a.) recombinant protein with GST-tag at N-terminal.
Species	Human
Source	Wheat Germ
Description	Modification of proteins with ubiquitin (UBB; MIM 191339) or ubiquitin-like proteins controls many signaling networks and requires a ubiquitin-activating enzyme (E1), a ubiquitin conjugating enzyme (E2), and a ubiquitin protein ligase (E3). UBE1L2 is an E1 enzyme that initiates the activation and conjugation of ubiquitin-like proteins (Jin et al., 2007 [PubMed 17597759]).[supplied by OMIM
Molecular Mass	68.31 kDa
AA Sequence	MEGSEPVAAHQGE EASCSSWGTGSTNKNLPIMSTASVEIDDALYSRQRYVLGDTA MQKMAKSHVFLSGMGGLGLEIAKNLVLGIAKAVTIHDTEKCQAWDLGTNFFLSEDDV VNKRNR AEAVLKHIAELNPYVHVTS SSVPFNETDLSFLDKYQCVVLTEMKLPLQKKI NDFCRSQC PPIKFISADVHGIWSRLFCDFGDEFVLDTTGEEPKEIFISNITQANPGIV TCLENHPHKLETGQFLTFREINGMTGLNGSIQQITVISPF SFSIGDTTELEPYLHGGIA VQVKTPKTVFFESLERQLKHPKCLIVDFSNPEAPLEIHTAMLALDQFQEKYSRKP NV GCQQDSEELLKLATSISETLEEKVTIEIYGCPNICLLIHKCSVY
Applications	Enzyme-linked Immunoabsorbent Assay Western Blot (Recombinant protein)

 Tel: 1-631-559-9269 1-516-512-3133

 Email: info@creative-biomart.com  Fax: 1-631-938-8127

 45-1 Ramsey Road, Shirley, NY 11967, USA

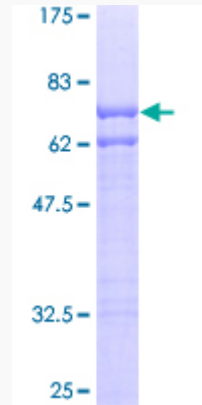
	Antibody Production Protein Array
Notes	Best use within three months from the date of receipt of this protein.
Storage	Store at -80 centigrade. Aliquot to avoid repeated freezing and thawing.
Storage Buffer	50 mM Tris-HCl, 10 mM reduced Glutathione, pH=8.0 in the elution buffer.
GENE INFORMATION	
Gene Name	UBA6 ubiquitin-like modifier activating enzyme 6 [Homo sapiens]
Official Symbol	UBA6
Synonyms	UBA6; ubiquitin-like modifier activating enzyme 6; UBE1L2, ubiquitin activating enzyme E1 like 2; ubiquitin-like modifier-activating enzyme 6; FLJ10808; ubiquitin activating enzyme E1; monocyte protein 4; ubiquitin-activating enzyme 6; UBA6, ubiquitin-activating enzyme E1; ubiquitin-activating enzyme E1-like 2; ubiquitin-activating enzyme E1-like protein 2; E1-L2; MOP-4; UBE1L2; FLJ23367;
Gene ID	55236
mRNA Refseq	NM_018227
Protein Refseq	NP_060697
MIM	611361
UniProt ID	A0AVT1

 Tel: 1-631-559-9269 1-516-512-3133

 Email: info@creative-biomart.com  Fax: 1-631-938-8127

 45-1 Ramsey Road, Shirley, NY 11967, USA

**Quality Control
Testing**



12.5% SDS-PAGE Stained with Coomassie Blue.

 Tel: 1-631-559-9269 1-516-512-3133

 Email: info@creative-biomart.com  Fax: 1-631-938-8127

 45-1 Ramsey Road, Shirley, NY 11967, USA