

## Recombinant Human UBC Protein

Cat. No. UBC-086H    Lot. No. (See product label)

### SPECIFICATION

<b>Product Overview</b>	Recombinant human UBC protein without tag was expressed in E. coli
<b>Species</b>	Human
<b>Source</b>	E.coli
<b>Description</b>	This gene represents a ubiquitin gene, ubiquitin C. The encoded protein is a polyubiquitin precursor. Conjugation of ubiquitin monomers or polymers can lead to various effects within a cell, depending on the residues to which ubiquitin is conjugated. Ubiquitination has been associated with protein degradation, DNA repair, cell cycle regulation, kinase modification, endocytosis, and regulation of other cell signaling pathways.
<b>Molecular Mass</b>	8.6 kDa
<b>Purity</b>	≥95% as determined by SDS-PAGE
<b>Stability</b>	≥ 1 year
<b>Storage</b>	At -80 centigrade.
<b>Storage Buffer</b>	50 mM Tris, pH 7.5, 150 mM sodium chloride, containing 5% glycerol

### GENE INFORMATION

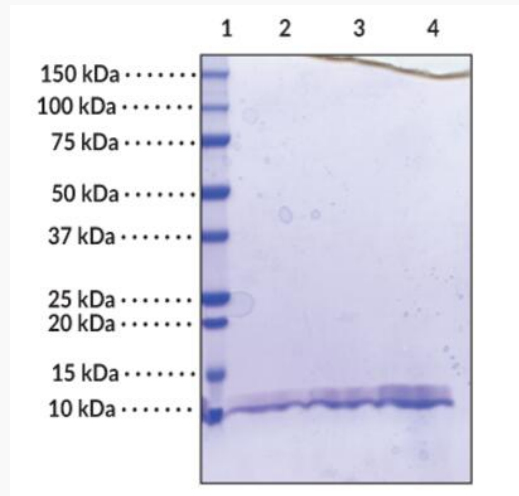
 Tel: 1-631-559-9269    1-516-512-3133

 Email: [info@creative-biomart.com](mailto:info@creative-biomart.com)     Fax: 1-631-938-8127

 45-1 Ramsey Road, Shirley, NY 11967, USA

<b>Gene Name</b>	UBC ubiquitin C [ Homo sapiens (human) ]
<b>Official Symbol</b>	UBC
<b>Synonyms</b>	UBC; ubiquitin C; HMG20; polyubiquitin-C
<b>Gene ID</b>	7316
<b>mRNA Refseq</b>	NM_021009
<b>Protein Refseq</b>	NP_066289
<b>MIM</b>	191340
<b>UniProt ID</b>	P0CG48

**SDS-PAGE analysis  
of Ubiquitin**



Lane 1: MW Markers  
Lane 2: Ubiquitin (2 µg)

Tel: 1-631-559-9269 1-516-512-3133

Email: [info@creative-biomart.com](mailto:info@creative-biomart.com) Fax: 1-631-938-8127

45-1 Ramsey Road, Shirley, NY 11967, USA



Lane 3: Ubiquitin (3 µg)

Lane 4: Ubiquitin (8 µg)

 Tel: 1-631-559-9269 1-516-512-3133

 Email: [info@creative-biomart.com](mailto:info@creative-biomart.com)  Fax: 1-631-938-8127

 45-1 Ramsey Road, Shirley, NY 11967, USA