

## Recombinant Human UBE2I Protein, 1-158aa, GST-tagged

Cat. No. UBC9-3525H Lot. No. (See product label)

### SPECIFICATION

|                         |   |
|-------------------------|---|
| <b>Product Overview</b> | Recombinant Human UBE2I Protein (1-158aa) with GST tag was expressed in E. coli.  |
| <b>Species</b>          | Human   |
| <b>Source</b>           | E.coli  |
| <b>ProteinLength</b>    | 1-158 a.a.  |
| <b>Description</b>      | The modification of proteins with ubiquitin is an important cellular mechanism for targeting abnormal or short-lived proteins for degradation. Ubiquitination involves at least three classes of enzymes: ubiquitin-activating enzymes, or E1s, ubiquitin-conjugating enzymes, or E2s, and ubiquitin-protein ligases, or E3s. This gene encodes a member of the E2 ubiquitin-conjugating enzyme family. Four alternatively spliced transcript variants encoding the same protein have been found for this gene. |
| <b>Molecular Mass</b>   | ~ 44.8KDa, reducing conditions  |
| <b>AA Sequence</b>      | MSPILGYWKIKGLVQPTRLLEYLEEKYEEHLYERDEGDKWRNKKFELGLEFPNLPY<br>YIDGDVKLTQSMARIYIADKHNLGGCPKERAEISMLEGAVLDIRYGVSRRIAYSKDFE<br>TLKVDFLSKLPEMLKMFEDRLCHKTYLNGDHVTHPDFMLYDALDVVLYMDPMCLDA<br>FPKLVCFKKRIEAIQIDKYLKSSKYIAWPLQGQWQATFGGGDHPPKSDLEVLVLFQGPL<br>GSMGIALSRLAQRKAWRKDHPFGFVAVPTKNPDGTMNLMNWECaipgkkgtpw<br>EGGLFKLRMLFKDDYPSSPPKCKFEPPLFHPNVYPSGTVCLSILEEDKDWRPAITIKQ<br>ILLGIQELLNEPNIQDPAQAEAYTIYCQNRVEYEKRVRAQAKKFAPS   |

 Tel: 1-631-559-9269 1-516-512-3133

 Email: [info@creative-biomart.com](mailto:info@creative-biomart.com)  Fax: 1-631-938-8127

 45-1 Ramsey Road, Shirley, NY 11967, USA

|                       |   |
|-----------------------|---|
| <b>Purity</b>         | > 90% as determined by SDS-PAGE   |
| <b>Storage</b>        | Store it under sterile conditions at -20 to -80 centigrade. It is recommended that the protein be aliquoted for optimal storage. Avoid repeated freeze-thaw cycles. |
| <b>Concentration</b>  | 0.54 mg/mL  |
| <b>Storage Buffer</b> | Supplied as a 0.2 µm filtered solution in PBS, pH 8.0   |

## GENE INFORMATION

|                        |  |
|------------------------|--|
| <b>Gene Name</b>       | UBE2I ubiquitin conjugating enzyme E2 I [ Homo sapiens (human) ]   |
| <b>Official Symbol</b> | UBE2I  |
| <b>Synonyms</b>        | UBE2I; ubiquitin conjugating enzyme E2 I; P18; UBC9; C358B7.1; SUMO-conjugating enzyme UBC9; ; RING-type E3 SUMO transferase UBC9; SUMO-1-protein ligase; SUMO-protein ligase; ubiquitin carrier protein 9; ubiquitin carrier protein I; ubiquitin conjugating enzyme 9; ubiquitin conjugating enzyme E2I; ubiquitin-conjugating enzyme E2I (UBC9 homolog, yeast); ubiquitin-conjugating enzyme E2I (homologous to yeast UBC9); ubiquitin-conjugating enzyme UbcE2A; ubiquitin-like protein SUMO-1 conjugating enzyme; ubiquitin-protein ligase E2I; ubiquitin-protein ligase I; ; EC 6.3.2.19 |
| <b>Gene ID</b>         | 7329   |
| <b>mRNA Refseq</b>     | NM_194259  |
| <b>Protein Refseq</b>  | NP_919235  |
| <b>MIM</b>             | 601661   |

 Tel: 1-631-559-9269 1-516-512-3133

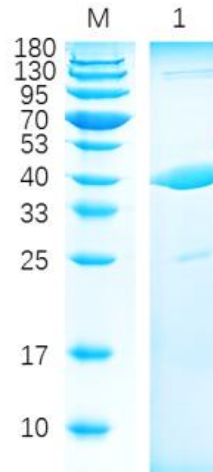
 Email: [info@creative-biomart.com](mailto:info@creative-biomart.com)  Fax: 1-631-938-8127

 45-1 Ramsey Road, Shirley, NY 11967, USA

UniProt ID

P63279

12% reducing SDS-  
PAGE analysis of  
purified UBC9



 Tel: 1-631-559-9269 1-516-512-3133

 Email: [info@creative-biomart.com](mailto:info@creative-biomart.com)  Fax: 1-631-938-8127

 45-1 Ramsey Road, Shirley, NY 11967, USA