

Active Recombinant Full Length Human ubiquitin like modifier activating enzyme 1 Protein, Flag Tagged

Cat. No. UBE1-05HFL Lot. No. (See product label)

SPECIFICATION

Product Overview Recombinant human full length UBE1 (Ubiquitin Activating Enzyme (E1), also known as UBA1, encompassing amino acids 2-1058 (end). This construct contains an N-terminal FLAG-tag. The recombinant protein was affinity purified.

Species Human

Source Sf9 Cells

ProteinLength 2-1058aa

Description The protein encoded by this gene catalyzes the first step in ubiquitin conjugation to mark cellular proteins for degradation. This gene complements an X-linked mouse temperature-sensitive defect in DNA synthesis, and thus may function in DNA repair. It is part of a gene cluster on chromosome Xp11.23. Alternatively spliced transcript variants that encode the same protein have been described.

Tag N-Flag


Form Aqueous buffer solution.

Bio-activity 3 pmole/min/μg

Molecular Mass 119 kDa

 Tel: 1-631-559-9269 1-516-512-3133

 Email: info@creative-biomart.com  Fax: 1-631-938-8127

 45-1 Ramsey Road, Shirley, NY 11967, USA

Purity	≥90%
Usage	Thaw on ice and gently mix prior to use. DO NOT VORTEX. Perform a quick spin before opening. Aliquot into small volumes and flash freeze for long term storage. Avoid multiple freeze/thaw cycles.
Applications	Useful in conjunction with E2 and E3 for the study of enzyme kinetics, screening inhibitors, and selectivity profiling.
Notes	Avoid freeze/thaw cycles
Storage	At least months at -80 centigrade.
Storage Buffer	40 mM Tris-HCl, pH 8.0, 110 mM NaCl, 2.2 mM KCl, 0.04% Tween20, 20% glycerol, 3 mM DTT, 80 µg/ml FLAG peptide.
Shipping	At -80 centigrade.
References	<ol style="list-style-type: none"> 1. Su Z.L. et al., Leuk. Lymphoma 49 (9), 1821-1822 (2008). 2. Ramser J. et al., Am. J. Hum. Genet. 82 (1), 188-193 (2008).

GENE INFORMATION

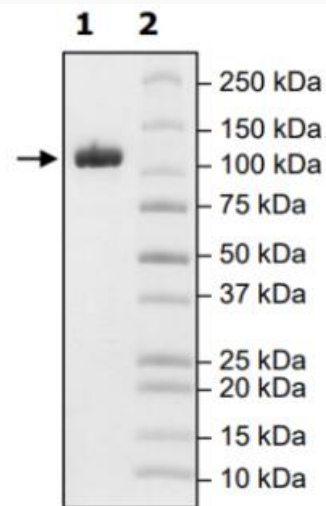
Gene Name	UBA1 ubiquitin like modifier activating enzyme 1 [Homo sapiens (human)]
Official Symbol	UBA1
Synonyms	UBA1; ubiquitin like modifier activating enzyme 1; A1S9; A1ST; GXP1; UBE1; A1S9T; AMCX1; POC20; SMAX2; UBA1A; UBE1X; VEXAS; CFAP124; ubiquitin-like modifier-activating enzyme 1; A1S9T and BN75 temperature sensitivity complementing; POC20 centriolar protein homolog; UBA1, ubiquitin-activating enzyme E1 homolog A;

 Tel: 1-631-559-9269 1-516-512-3133

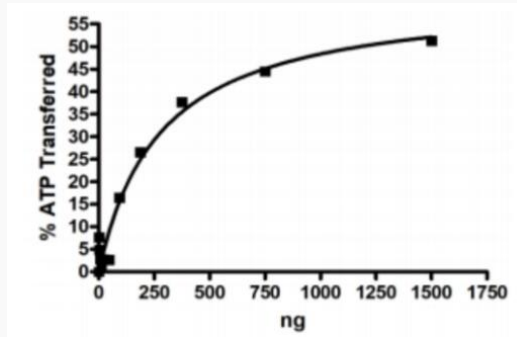
 Email: info@creative-biomart.com  Fax: 1-631-938-8127

 45-1 Ramsey Road, Shirley, NY 11967, USA

testicular secretory protein Li 63; EC 6.2.1.45


Gene ID [7317](#)**mRNA Refseq** [NM_003334](#)**Protein Refseq** [NP_003325](#)**MIM** [314370](#)**UniProt ID** [P22314](#)**SDS-PAGE** Tel: 1-631-559-9269 1-516-512-3133 Email: info@creative-biomart.com  Fax: 1-631-938-8127 45-1 Ramsey Road, Shirley, NY 11967, USA

Activity



 Tel: 1-631-559-9269 1-516-512-3133

 Email: info@creative-biomart.com  Fax: 1-631-938-8127

 45-1 Ramsey Road, Shirley, NY 11967, USA