

## Recombinant Mouse UBE2A protein, His-tagged

Cat. No. UBE2A-3359M    Lot. No. (See product label)

### SPECIFICATION

<b>Product Overview</b>	Recombinant Mouse UBE2A protein(Met1~Cys152), fused with N-terminal His Tag, was expressed in E.coli.
<b>Species</b>	Mouse
<b>Source</b>	E.coli
<b>ProteinLength</b>	Met1~Cys152
<b>Form</b>	PBS, pH7.4, containing 0.01% SKL, 1mM DTT, 5% Trehalose and Proclin300.
<b>Molecular Mass</b>	21kDa
<b>Endotoxin</b>	<1.0EU per 1g (determined by the LAL method)
<b>Purity</b>	> 90%
<b>Storage</b>	Avoid repeated freeze/thaw cycles. Store at 2-8°C for one month. Aliquot and store at -80°C for 12 months.
<b>Reconstitution</b>	Reconstitute in 10mM PBS (pH7.4) to a concentration of 0.1-1.0 mg/mL. Do not vortex.

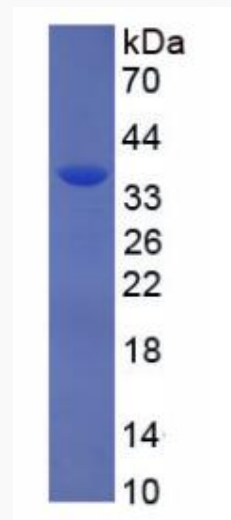
### GENE INFORMATION

 Tel: 1-631-559-9269    1-516-512-3133

 Email: [info@creative-biomart.com](mailto:info@creative-biomart.com)     Fax: 1-631-938-8127

 45-1 Ramsey Road, Shirley, NY 11967, USA

<b>Gene Name</b>	Ube2a ubiquitin-conjugating enzyme E2A, RAD6 homolog (S. cerevisiae) [ Mus musculus ]
<b>Official Symbol</b>	UBE2A
<b>Synonyms</b>	UBE2A; ubiquitin-conjugating enzyme E2A, RAD6 homolog (S. cerevisiae); ubiquitin-conjugating enzyme E2 A; RAD6 homolog A; ubiquitin-protein ligase A; ubiquitin carrier protein A; ubiquitin-conjugating enzyme HR6A; ubiquitin-conjugating enzyme E2A (RAD6 homolog); HR6A; HHR6A; Mhr6a;
<b>Gene ID</b>	22209
<b>mRNA Refseq</b>	NM_019668
<b>Protein Refseq</b>	NP_062642

**SDS-PAGE**


 Tel: 1-631-559-9269 1-516-512-3133

 Email: [info@creative-biomart.com](mailto:info@creative-biomart.com)  Fax: 1-631-938-8127

 45-1 Ramsey Road, Shirley, NY 11967, USA