

## Recombinant Human UBE2B, His-tagged

Cat. No. UBE2B-55H Lot. No. (See product label)

### SPECIFICATION

<b>Product Overview</b>	Recombinant human UBE2B protein, fused to His-tag at N-terminus, was expressed in <i>E.coli</i> and purified by using conventional chromatography techniques. MW = 21.4 kDa (188aa).
<b>Species</b>	Human
<b>Source</b>	E.coli
<b>Description</b>	UBE2B, also known as ubiquitin-conjugating enzyme E2 B, belongs to E2 ubiquitin-conjugating enzyme family. This protein catalyzes the covalent attachment of ubiquitin to other proteins, and associates to the E3 ligase RAD18 to form the UBE2B-RAD18 ubiquitin ligase complex involved in mono-ubiquitination of DNA-associated PCNA on "Lys-164". It is required for postreplication repair of UV-damaged DNA. It may be involved in neurite outgrowth.
<b>Form</b>	Liquid. 20mM Tris-HCl buffer (pH8.0) containing 10% glycerol 0.1M NaCl.
<b>Purity</b>	> 90% by SDS – PAGE.
<b>Concentration</b>	0.5 mg/ml (determined by Bradford assay).
<b>Sequences Of Amino Acids</b>	MRGSHHHHHH GMASMTGGQQ MGRDLYDDDD KDRWGSMSTP ARRRLMRDFK RLQEDPPVGV SGAPSENNIM QWNAVIFGPE GTPFEDGTFK LVIEFSEEYP NKPPTVRFLS KMFHPNVYAD GSICLDILQN RWSPTYDVSS ILTSIQSLLD EPNPNSPANS QAAQLYQENK REYEKRVSAI VEQSWNDS.

 Tel: 1-631-559-9269 1-516-512-3133

 Email: [info@creative-biomart.com](mailto:info@creative-biomart.com)  Fax: 1-631-938-8127

 45-1 Ramsey Road, Shirley, NY 11967, USA

**Storage** can be stored at +4°C short term (1-2 weeks). For long term storage, aliquot and store at -20°C or -70°C. Avoid repeated freezing and thawing cycles.

## GENE INFORMATION

**Gene Name** [UBE2B ubiquitin-conjugating enzyme E2B \(RAD6 homolog\) \[ Homo sapiens \]](#)

**Synonyms** UBE2B; ubiquitin-conjugating enzyme E2B (RAD6 homolog); HR6B; UBC2; HHR6B; RAD6B; E2-17kDa; ubiquitin-conjugating enzyme E2B; E2 protein; ubiquitin-protein ligase B; ubiquitin carrier protein B; Ubiquitin-conjugating enzyme E2 B; EC 6.3.2.19; Ubiquitin-protein ligase B; Ubiquitin carrier protein B; hHR6B

**Gene ID** [7320](#)

**mRNA Refseq** [NM\\_003337](#)

**Protein Refseq** [NP\\_003328](#)

**MIM** [179095](#)

**UniProt ID** [P63146](#)

**Chromosome Location** 5q31.1

**Pathway** Ubiquitin mediated proteolysis

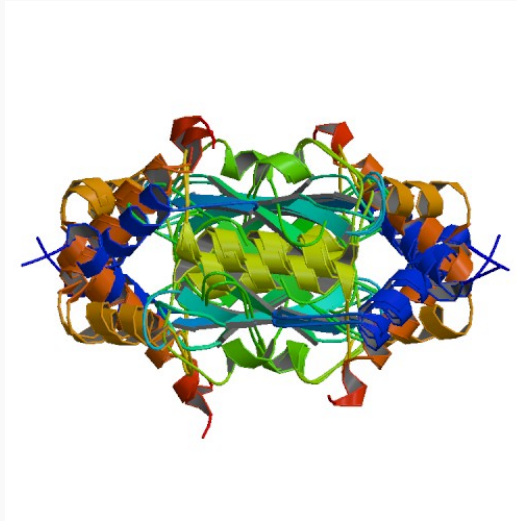
**Function** ATP binding; ligase activity; nucleotide binding; protein binding; ubiquitin protein ligase binding; ubiquitin-protein ligase activity; ubiquitin-protein ligase activity

 Tel: 1-631-559-9269 1-516-512-3133

 Email: [info@creative-biomart.com](mailto:info@creative-biomart.com)  Fax: 1-631-938-8127

 45-1 Ramsey Road, Shirley, NY 11967, USA

PDB rendering based  
on 1jas.



 Tel: 1-631-559-9269 1-516-512-3133

 Email: [info@creative-biomart.com](mailto:info@creative-biomart.com)  Fax: 1-631-938-8127

 45-1 Ramsey Road, Shirley, NY 11967, USA