

Recombinant Human UBE2C protein

Cat. No. UBE2C-04H Lot. No. (See product label)

SPECIFICATION

Product Overview Recombinant Human UBE2C protein was expressed in Escherichia coli.

Species Human

Source E.coli

ProteinLength 191

Description

Ubiquitin Conjugating Enzyme E2 C belongs to the ubiquitin-conjugating enzyme family and is encoded by the UBE2C gene in humans. The ubiquitin-conjugating enzymes, also known as E2 enzymes and more rarely as ubiquitin-carrier enzymes, take part in the second step in the ubiquitination reaction. In this reaction, E1 activates the ubiquitin by covalently attaching the molecule to its active site cysteine residue. The activated ubiquitin is then transferred to an E2 cysteine and then the E2 molecule binds E3 via a structurally conserved binding region. The UBE2C catalyzes the destruction of cyclins A and B in conjunction with the anaphase-promoting complex, and therefore, plays an important role in the control of the cell exit from mitosis. This activity is essential at the end of mitosis for the inactivation of their partner kinase Cdc2 and exit from mitosis into G1 of the next cell cycle. In addition, UBCH10 bears homology to yeast PAS2, a gene that is essential for biogenesis of peroxisomes. UBCH10 is useful for in vitro ubiquitinylation reactions.

Form

0.2µm Filtered concentrated solution in 50 mM HEPES, pH 8.0, with 125 mM NaCl, 10 % Glycerol, 5 % Trehalose, 1 mM DTT.

 Tel: 1-631-559-9269 1-516-512-3133

 Email: info@creative-biomart.com  Fax: 1-631-938-8127

 45-1 Ramsey Road, Shirley, NY 11967, USA

Molecular Mass	Approximately 21.1 kDa, a single non-glycosylated polypeptide chain containing 179 amino acids (a.a.) of human UBE2C/UBCH10 and 12 a.a. vector sequence including 6 x His tag at N-terminus.
AA Sequence	MHHHHHHAMGIRMASQNRDPAATSVAARKGAEPSSGGAARGPVGKRLQQELMTL MMSGDKGISAFPESDNLFKWVGTIHGAAGTVYEDLRYKLSLEFPSGYPYNAPT VKFL TPCYHPNVDTQGNICLDILKEKWSALYDVRTILLSIQSLLGEPNIDSPLNTHAAELWKN PTAFKKYLQETYSKQVTSQEP
Endotoxin	Less than 1 EU/g of rHuUBE2C, His as determined by LAL method.
Purity	>95% by SDS-PAGE and HPLC analysis.
Storage	Use a manual defrost freezer and avoid repeated freeze-thaw cycles. 6 months from date of receipt, -20 to -70 centigrade as supplied. 3 months, -20 to -70 centigrade under sterile conditions after opening.

GENE INFORMATION

Gene Name	UBE2C
Official Symbol	UBE2C
Synonyms	UBE2C; ubiquitin-conjugating enzyme E2C; ubiquitin-conjugating enzyme E2 C; UBCH10; ubiquitin-protein ligase C; ubiquitin carrier protein C; ubiquitin carrier protein E2-C; cyclin-selective ubiquitin carrier protein; mitotic-specific ubiquitin-conjugating enzyme; dJ447F3.2;
Gene ID	11065
mRNA Refseq	NM_007019

 Tel: 1-631-559-9269 1-516-512-3133

 Email: info@creative-biomart.com  Fax: 1-631-938-8127

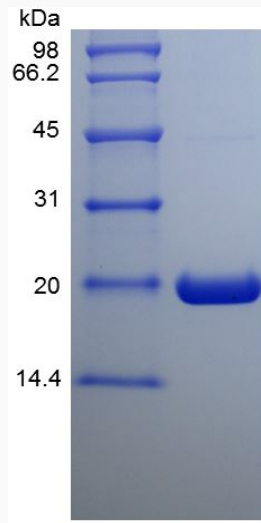
 45-1 Ramsey Road, Shirley, NY 11967, USA

Protein Refseq NP_008950

MIM 605574

UniProt ID O00762

**SDS-PAGE of
UBE2C-04H**



 Tel: 1-631-559-9269 1-516-512-3133

 Email: info@creative-biomart.com  Fax: 1-631-938-8127

 45-1 Ramsey Road, Shirley, NY 11967, USA