

Recombinant Human UBE2C Protein (Ala2-Pro179), N-His tagged

Cat. No. UBE2C-5587H Lot. No. (See product label)

SPECIFICATION

Product Overview	Recombinant human UBE2C (Ala2-Pro179) fused with the N-His tag was expressed in E. coli.
Species	Human
Source	E.coli
ProteinLength	Ala2-Pro179
Form	Lyophilized powder/frozen liquid
Molecular Mass	21.83 kDa
Purity	> 90 % as determined by SDS-PAGE
Notes	For research use only.
Storage	Use a manual defrost freezer and avoid repeated freeze thaw cycles. Store at 2 to 8 centigrade for one week. Store at -20 to -80 centigrade for twelve months from the date of receipt.
Storage Buffer	0.01M PBS, pH 7.4, 0.02 % NLS
Reconstitution	Reconstitute in sterile water for a stock solution.

 Tel: 1-631-559-9269 1-516-512-3133

 Email: info@creative-biomart.com  Fax: 1-631-938-8127

 45-1 Ramsey Road, Shirley, NY 11967, USA

Shipping They are shipped out with dry ice/blue ice unless customers require otherwise.

GENE INFORMATION

Gene Name UBE2C ubiquitin-conjugating enzyme E2C [Homo sapiens (human)]

Official Symbol UBE2C

Synonyms UBE2C; ubiquitin-conjugating enzyme E2C; ubiquitin-conjugating enzyme E2 C; UBCH10; ubiquitin-protein ligase C; ubiquitin carrier protein C; ubiquitin carrier protein E2-C; cyclin-selective ubiquitin carrier protein; mitotic-specific ubiquitin-conjugating enzyme; dJ447F3.2;

Gene ID 11065

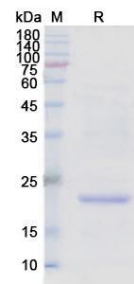
mRNA Refseq NM_007019

Protein Refseq NP_008950

MIM 605574

UniProt ID O00762

SDS-PAGE



 Tel: 1-631-559-9269 1-516-512-3133

 Email: info@creative-biomart.com  Fax: 1-631-938-8127

 45-1 Ramsey Road, Shirley, NY 11967, USA