

Recombinant Human UBE2C Protein, Myc/DDK-tagged, C13 and N15-labeled

Cat. No. UBE2C-5732H Lot. No. (See product label)

SPECIFICATION

Product Overview

UBE2C MS Standard C13 and N15-labeled recombinant protein (NP_008950) with a C-terminal MYC/DDK tag, was expressed in HEK293 cells.

Species

Human

Source

HEK293

Description

The modification of proteins with ubiquitin is an important cellular mechanism for targeting abnormal or short-lived proteins for degradation. Ubiquitination involves at least three classes of enzymes: ubiquitin-activating enzymes, ubiquitin-conjugating enzymes, and ubiquitin-protein ligases. This gene encodes a member of the E2 ubiquitin-conjugating enzyme family. The encoded protein is required for the destruction of mitotic cyclins and for cell cycle progression, and may be involved in cancer progression. Multiple transcript variants encoding different isoforms have been found for this gene. Pseudogenes of this gene have been defined on chromosomes 4, 14, 15, 18, and 19.

Molecular Mass

19.7 kDa

AA Sequence

MASQNRDPAATSVAARKGAEPSSGGAARGPVGKRLQQELMTLMMSGDKGISAFPE
SDNLFKWVGTIHGAAGTVYEDLRYKLSLEFPGYPYNAPTVKFLTPCYHPNVDTQG
NICLDILKEKWSALYDVRTILLSIQSLLGEPNIDSPLNTHAAELWKNPTAFKKYLQETY
SKQVTSQEPTTRTRPLEQKLISEEDLAANDILDYKDDDDKV

 Tel: 1-631-559-9269 1-516-512-3133

 Email: info@creative-biomart.com  Fax: 1-631-938-8127

 45-1 Ramsey Road, Shirley, NY 11967, USA

Purity	> 80% as determined by SDS-PAGE and Coomassie blue staining
Stability	Stable for 3 months from receipt of products under proper storage and handling conditions.
Storage	Store at -80 centigrade. Avoid repeated freeze-thaw cycles.
Concentration	50 µg/mL as determined by BCA
Storage Buffer	100 mM glycine, 25 mM Tris-HCl, pH 7.3.

GENE INFORMATION

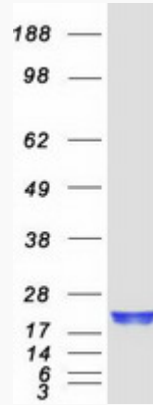
Gene Name	UBE2C ubiquitin-conjugating enzyme E2C [Homo sapiens (human)]
Official Symbol	UBE2C
Synonyms	UBE2C; ubiquitin-conjugating enzyme E2C; ubiquitin-conjugating enzyme E2 C; UBCH10; ubiquitin-protein ligase C; ubiquitin carrier protein C; ubiquitin carrier protein E2-C; cyclin-selective ubiquitin carrier protein; mitotic-specific ubiquitin-conjugating enzyme; dJ447F3.2;
Gene ID	11065
mRNA Refseq	NM_007019
Protein Refseq	NP_008950
MIM	605574
UniProt ID	O00762

 Tel: 1-631-559-9269 1-516-512-3133

 Email: info@creative-biomart.com  Fax: 1-631-938-8127

 45-1 Ramsey Road, Shirley, NY 11967, USA

SDS-PAGE



 Tel: 1-631-559-9269 1-516-512-3133

 Email: info@creative-biomart.com  Fax: 1-631-938-8127

 45-1 Ramsey Road, Shirley, NY 11967, USA