

# Recombinant Human UBE2C Protein, Myc/DDK-tagged, C13 and N15-labeled

Cat. No. UBE2C-5854H    Lot. No. (See product label)

## SPECIFICATION

### Product Overview

UBE2C MS Standard C13 and N15-labeled recombinant protein (NP\_861517) with a C-terminal MYC/DDK tag, was expressed in HEK293 cells.

### Species

Human

### Source

HEK293

### Description

The modification of proteins with ubiquitin is an important cellular mechanism for targeting abnormal or short-lived proteins for degradation. Ubiquitination involves at least three classes of enzymes: ubiquitin-activating enzymes, ubiquitin-conjugating enzymes, and ubiquitin-protein ligases. This gene encodes a member of the E2 ubiquitin-conjugating enzyme family. The encoded protein is required for the destruction of mitotic cyclins and for cell cycle progression, and may be involved in cancer progression. Multiple transcript variants encoding different isoforms have been found for this gene. Pseudogenes of this gene have been defined on chromosomes 4, 14, 15, 18, and 19.

### Molecular Mass

19.7 kDa

### AA Sequence

MASQNRDPAATSVAARKGAEPSSGGAARGPVGKRLQQELMTLMMSGDKGISAFPE  
SDNLFKWVGTIHGAAGTVYEDLRYKLSLEFSPGYPNAPTvkFLTPCYHPNVDTQG  
NICLDILKEKWSALYDVRTILLSIQSLLGEPNIDSPLNTHAAELWKNPTAFKKYLQETY  
SKQVTSQEPTTRTRPLEQKLISEEDLAANDILDYKDDDDKV

 Tel: 1-631-559-9269    1-516-512-3133

 Email: [info@creative-biomart.com](mailto:info@creative-biomart.com)     Fax: 1-631-938-8127

 45-1 Ramsey Road, Shirley, NY 11967, USA

<b>Purity</b>	> 80% as determined by SDS-PAGE and Coomassie blue staining
<b>Stability</b>	Stable for 3 months from receipt of products under proper storage and handling conditions.
<b>Storage</b>	Store at -80 centigrade. Avoid repeated freeze-thaw cycles.
<b>Concentration</b>	50 µg/mL as determined by BCA
<b>Storage Buffer</b>	100 mM glycine, 25 mM Tris-HCl, pH 7.3.

## GENE INFORMATION

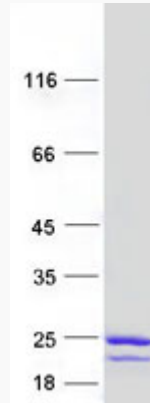
<b>Gene Name</b>	UBE2C ubiquitin-conjugating enzyme E2C [ Homo sapiens (human) ]
<b>Official Symbol</b>	UBE2C
<b>Synonyms</b>	UBE2C; ubiquitin-conjugating enzyme E2C; ubiquitin-conjugating enzyme E2 C; UBCH10; ubiquitin-protein ligase C; ubiquitin carrier protein C; ubiquitin carrier protein E2-C; cyclin-selective ubiquitin carrier protein; mitotic-specific ubiquitin-conjugating enzyme; dJ447F3.2;
<b>Gene ID</b>	11065
<b>mRNA Refseq</b>	NM_181801
<b>Protein Refseq</b>	NP_861517
<b>MIM</b>	605574
<b>UniProt ID</b>	O00762

 Tel: 1-631-559-9269 1-516-512-3133

 Email: [info@creative-biomart.com](mailto:info@creative-biomart.com)  Fax: 1-631-938-8127

 45-1 Ramsey Road, Shirley, NY 11967, USA

**SDS-PAGE**



 Tel: 1-631-559-9269 1-516-512-3133

 Email: [info@creative-biomart.com](mailto:info@creative-biomart.com)  Fax: 1-631-938-8127

 45-1 Ramsey Road, Shirley, NY 11967, USA