

Recombinant Full Length Human UBE2C Protein, C-Flag-tagged

Cat. No. UBE2C-792HFL **Lot. No.** (See product label)

SPECIFICATION

| | |
|-------------------------|--|
| Product Overview | Recombinant Full Length Human UBE2C Protein, fused to Flag-tag at C-terminus, was expressed in Mammalian cells. |
| Species | Human |
| Source | Mammalian Cells |
| Description | The modification of proteins with ubiquitin is an important cellular mechanism for targeting abnormal or short-lived proteins for degradation. Ubiquitination involves at least three classes of enzymes: ubiquitin-activating enzymes, ubiquitin-conjugating enzymes, and ubiquitin-protein ligases. This gene encodes a member of the E2 ubiquitin-conjugating enzyme family. The encoded protein is required for the destruction of mitotic cyclins and for cell cycle progression, and may be involved in cancer progression. Multiple transcript variants encoding different isoforms have been found for this gene. Pseudogenes of this gene have been defined on chromosomes 4, 14, 15, 18, and 19. |
| Form | 25 mM Tris HCl, pH 7.3, 100 mM glycine, 10% glycerol. |
| Molecular Mass | 19.5 kDa |
| AA Sequence | MASQNRDPAATSVAARKGAEPSSGAARGPVGKRLQQELMTLMMMSGDKGISAFPE SDNLFKWVGTIHGAA GTVYEDLRYKLSLEFPSSGYPYNAPTVMKFLTPCYHPNVDTQG NICLDILKEKWSALYDVRTILLSIQSLLG |

 Tel: 1-631-559-9269 1-516-512-3133

 Email: info@creative-biomart.com  Fax: 1-631-938-8127

 45-1 Ramsey Road, Shirley, NY 11967, USA

EPNIDSPLNTHAAELWKNPTAFKKYLQETYSKQVTSQEPTTRTRPLEQKLISEEDLAA
NDILDYKDDDDKV

| | |
|-------------------------|---|
| Purity | > 80% as determined by SDS-PAGE and Coomassie blue staining. |
| Stability | Stable for 12 months from the date of receipt of the product under proper storage and handling conditions. Avoid repeated freeze-thaw cycles. |
| Storage | Store at -80 centigrade. |
| Concentration | >50 ug/mL as determined by microplate BCA method. |
| Preparation | Recombinant protein was captured through anti-DDK affinity column followed by conventional chromatography steps. |
| Protein Families | Druggable Genome |
| Protein Pathways | Ubiquitin mediated proteolysis |
| Full Length | Full L. |

GENE INFORMATION

| | |
|------------------------|--|
| Gene Name | UBE2C ubiquitin conjugating enzyme E2 C [Homo sapiens (human)] |
| Official Symbol | UBE2C |
| Synonyms | UBCH10; dJ447F3.2 |
| Gene ID | 11065 |

 Tel: 1-631-559-9269 1-516-512-3133

 Email: info@creative-biomart.com  Fax: 1-631-938-8127

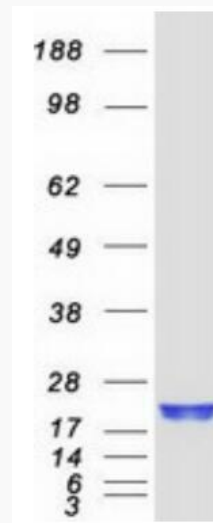
 45-1 Ramsey Road, Shirley, NY 11967, USA

mRNA Refseq [NM_007019.4](#)

Protein Refseq [NP_008950.1](#)

MIM [605574](#)

UniProt ID [O00762](#)



Coomassie blue staining of purified UBE2C protein.

 Tel: 1-631-559-9269 1-516-512-3133

 Email: info@creative-biomart.com  Fax: 1-631-938-8127

 45-1 Ramsey Road, Shirley, NY 11967, USA