

Recombinant Human UBE2D1 protein, His-tagged

Cat. No. UBE2D1-4561H Lot. No. (See product label)

SPECIFICATION

Product Overview	Recombinant Human UBE2D1 protein(P51668)(162aa), fused with N-terminal His tag, was expressed in E. coli.
Species	Human
Source	E.coli
Protein Length	162aa(including fusion tag)
Tag	N-His
Form	20mM Tris.Cl, 50mM NaCl, 50% Glycerol, pH9.0.
Molecular Mass	18.5kDa(including fusion tag)
Storage	Store at -80°C and avoid repeated freeze-thaw cycles.
Reconstitution	It is recommended that sterile water be added to the vial to prepare a stock solution of 0.2 ug/ul. Centrifuge the vial at 4°C before opening to recover the entire contents.

GENE INFORMATION

Gene Name	UBE2D1 ubiquitin-conjugating enzyme E2D 1 [Homo sapiens]
Official Symbol	UBE2D1

 Tel: 1-631-559-9269 1-516-512-3133

 Email: info@creative-biomart.com  Fax: 1-631-938-8127

 45-1 Ramsey Road, Shirley, NY 11967, USA

Synonyms

UBE2D1; ubiquitin-conjugating enzyme E2D 1; SFT, stimulator of Fe transport , ubiquitin conjugating enzyme E2D 1 (UBC4/5 homolog, yeast); ubiquitin-conjugating enzyme E2 D1; E2(17)KB1; UBC4/5; UBCH5; UbcH5A; UBC4/5 homolog; stimulator of Fe transport; ubiquitin-protein ligase D1; ubiquitin carrier protein D1; ubiquitin-conjugating enzyme E2(17)KB 1; ubiquitin-conjugating enzyme E2-17 kDa 1; ubiquitin-conjugating enzyme E2D 1 (UBC4/5 homolog, yeast); SFT; UBCH5A;

Gene ID

7321

mRNA Refseq

NM_001204880

Protein Refseq

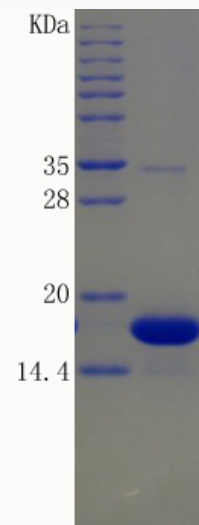
NP_001191809


MIM

602961

UniProt ID

P51668

SDS-PAGE


 Tel: 1-631-559-9269 1-516-512-3133

 Email: info@creative-biomart.com  Fax: 1-631-938-8127

 45-1 Ramsey Road, Shirley, NY 11967, USA