

Recombinant Human UBE2D1, His-tagged

Cat. No. UBE2D1-66H Lot. No. (See product label)

SPECIFICATION

Product Overview	Recombinant human UBE2D1 protein, fused to His-tag at N-terminus, was expressed in E.coli and purified by using conventional chromatography.
Species	Human
Source	E.coli
Description	UBE2D1 belongs to the ubiquitin-conjugating enzyme family. Ubiquitination involves at least three classes of enzymes: ubiquitin-activating enzymes, or E1s, ubiquitin-conjugating enzymes, or E2s, and ubiquitin-protein ligases, or E3s. This gene encodes a member of the E2 ubiquitin-conjugating enzyme family. UBE2D1 is closely related to a stimulator of iron transport (SFT), and is up-regulated in hereditary hemochromatosis. It also functions in the ubiquitination of the tumor-suppressor protein p53 and the hypoxia-inducible transcription factor HIF1alpha by interacting with the E1 ubiquitin-activating enzyme and the E3 ubiquitin-protein ligases.
Form	Liquid. 20mM Tris-HCl buffer (pH8.0) containing 40% glycerol, 0.1M NaCl
Molecular weight	19.0 kDa (170aa), confirmed by MALDI-TOF
Purity	> 95% by SDS - PAGE
Concentration	1 mg/ml (determined by Bradford assay)
Sequences of amino	MGSSHHHHHH SSSLVPRGSH MGSMALKRIQ KELSDLQRDP PAHCSAGPVG

 Tel: 1-631-559-9269 1-516-512-3133

 Email: info@creative-biomart.com  Fax: 1-631-938-8127

 45-1 Ramsey Road, Shirley, NY 11967, USA

acids DDLFHWQATI MGPPDSAYQG GVFFLTVHFP TDYPFKPPKI AFTTKIYHPN
 INSNGSICLD ILRSQWSPAL TVSKVLLSIC SLLCDPNPDD PLVPDIAQIY
 KSDKEKYNRH AREWTQKYAM

Storage Can be stored at +4°C short term (1-2 weeks). For long term storage, aliquot and store at -20°C or -70°C. Avoid repeated freezing and thawing cycles.

GENE INFORMATION

Gene Name [UBE2D1 ubiquitin-conjugating enzyme E2D 1 \(UBC4/5 homolog, yeast\) \[Homo sapiens \]](#)

Synonyms ubiquitin-conjugating enzyme E2D 1(UBC4/5 homolog, yeast); UBCH5; UBC4/5; UBCH5A; E2(17)KB1; UBC4/5 homolog; stimulator of Fe transport; UBE2D1; ubiquitin-protein ligase D1; ubiquitin carrier protein D1; SFT; ubiquitin-conjugating enzyme E2(17)KB 1; ubiquitin-conjugating enzyme E2-17 kDa 1; SFT; Ubch5A; EC 6.3.2.19; Ubiquitin-conjugating enzyme E2 D1; EC=6.3.2.19

Gene ID [7321](#)

mRNA Refseq [NM_003338](#)

Protein Refseq [NP_003329](#)

MIM [602961](#)

UniProt ID [P51668](#)

Chromosome Location 10q21.1

 Tel: 1-631-559-9269 1-516-512-3133

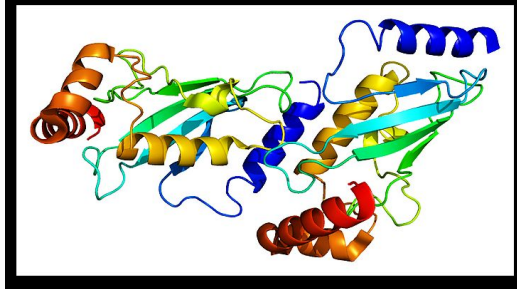
 Email: info@creative-biomart.com  Fax: 1-631-938-8127

 45-1 Ramsey Road, Shirley, NY 11967, USA

Function

ATP binding; acid-amino acid ligase activity; ligase activity; protein binding; ubiquitin-protein ligase activity; nucleotide binding

PDB rendering based on 2c4p.



 Tel: 1-631-559-9269 1-516-512-3133

 Email: info@creative-biomart.com  Fax: 1-631-938-8127

 45-1 Ramsey Road, Shirley, NY 11967, USA