

Recombinant Human UBE2D2 Protein, His-tagged

Cat. No. UBE2D2-243H Lot. No. (See product label)

SPECIFICATION

Product Overview	Recombinant Human UBE2D2(1-147aa) fused with His tag was expressed in E. coli.
Species	Human
Source	E.coli
ProteinLength	1-147aa
Description	UBE2D2, also known as Ubiquitin-conjugating enzyme E2 D2, is a member of the E2 ubiquitin-conjugating enzyme family. This enzyme functions in the ubiquitination of the tumor-suppressor protein p53, which is induced by an E3 ubiquitin-protein ligase. UBE2D2 catalyzes ubiquitination of I κ B-alpha in a phosphorylation and SCFB-TRCP dependent manner.
Form	Liquid. In Phosphate Buffered Saline (pH 7.4) containing 10% glycerol.
Molecular Mass	16.7 kDa (147aa) Confirmed by MALDI-TOF
AA Sequence	MALKRIHKEL NDLARDPPAQ CSAGPVGDDM FHWQATIMGP NDSPYQGGVF FLTIHFPTDY PFKPPKVAFT TRIYHPNINS NGSICLDILR SQWSPALTIS KVLLSICSL CDPNPDDPLV PEIARIYKTD REKYNRIARE WTQKYAM
Purity	> 95% by SDS - PAGE

 Tel: 1-631-559-9269 1-516-512-3133

 Email: info@creative-biomart.com  Fax: 1-631-938-8127

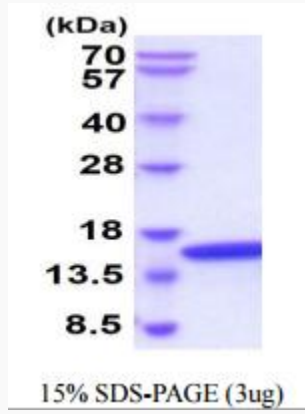
 45-1 Ramsey Road, Shirley, NY 11967, USA

Applications	SDS-PAGE
Storage	Can be stored at +4 centigrade short term (1-2 weeks). For long term storage, aliquot and store at -20 centigrade or -70 centigrade. Avoid repeated freezing and thawing cycles.
Concentration	0.5 mg/ml (determined by Absorbance at 280)
GENE INFORMATION	
Gene Name	UBE2D2 ubiquitin-conjugating enzyme E2D 2 [Homo sapiens]
Official Symbol	UBE2D2
Synonyms	UBE2D2; ubiquitin-conjugating enzyme E2D 2; ubiquitin conjugating enzyme E2D 2 (homologous to yeast UBC4/5) , ubiquitin conjugating enzyme E2D 2 (UBC4/5 homolog, yeast); ubiquitin-conjugating enzyme E2 D2; UBC4; Ubch5B; ubiquitin-protein ligase D2; ubiquitin carrier protein D2; ubiquitin-conjugating enzyme E2(17)KB 2; ubiquitin-conjugating enzyme E2-17 kDa 2; ubiquitin-conjugating enzyme E2D 2 (UBC4/5 homolog, yeast); ubiquitin-conjugating enzyme E2D 2 (homologous to yeast UBC4/5); PUBC1; UBC4/5; UBCH5B; E2(17)KB2;
Gene ID	7322
mRNA Refseq	NM_003339
Protein Refseq	NP_003330
MIM	602962
UniProt ID	P62837

 Tel: 1-631-559-9269 1-516-512-3133

 Email: info@creative-biomart.com  Fax: 1-631-938-8127

 45-1 Ramsey Road, Shirley, NY 11967, USA



 Tel: 1-631-559-9269 1-516-512-3133

 Email: info@creative-biomart.com  Fax: 1-631-938-8127

 45-1 Ramsey Road, Shirley, NY 11967, USA