

Recombinant Human UBE2D2 Protein, Myc/DDK-tagged, C13 and N15-labeled

Cat. No. UBE2D2-5438H **Lot. No.** (See product label)

SPECIFICATION

Product Overview	UBE2D2 MS Standard C13 and N15-labeled recombinant protein (NP_003330) with a C-terminal MYC/DDK tag, was expressed in HEK293 cells.
Species	Human
Source	HEK293
Description	Regulated degradation of misfolded, damaged or short-lived proteins in eukaryotes occurs via the ubiquitin (Ub)-proteasome system (UPS). An integral part of the UPS system is the ubiquitination of target proteins and covalent linkage of Ub-containing proteins to form polymeric chains, marking them as targets for 26S proteasome-mediated degradation. Ubiquitination of proteins is mediated by a cascade of enzymes which includes E1 (ubiquitin activating), E2 (ubiquitin conjugating), and E3 (ubiquitin ligases) enzymes. This gene encodes a member of the E2 enzyme family. Substrates of this enzyme include the tumor suppressor protein p53 and peroxisomal biogenesis factor 5 (PEX5). Alternative splicing results in multiple transcript variants of this gene.
Molecular Mass	16.7 kDa
AA Sequence	MALKRIHKELNDLARDPPAQCSAGPVGDDMFHWQATIMGPNDSPYQGGVFFLTIHF PTDYPFKPPKVAFTTRIIYHPNINSNGSICLDILRSQWSPALTISKVLLSICSLLCDPNPD DPLVPEIARIYKTDREKYNRIAREWTQKYAMTRTRPLEQKLISEEDLAANDILDYKDD

 Tel: 1-631-559-9269 1-516-512-3133

 Email: info@creative-biomart.com  Fax: 1-631-938-8127

 45-1 Ramsey Road, Shirley, NY 11967, USA

	DDKV
Purity	> 80% as determined by SDS-PAGE and Coomassie blue staining
Stability	Stable for 3 months from receipt of products under proper storage and handling conditions.
Storage	Store at -80 centigrade. Avoid repeated freeze-thaw cycles.
Concentration	50 µg/mL as determined by BCA
Storage Buffer	100 mM glycine, 25 mM Tris-HCl, pH 7.3.
GENE INFORMATION	
Gene Name	UBE2D2 ubiquitin-conjugating enzyme E2D 2 [Homo sapiens (human)]
Official Symbol	UBE2D2
Synonyms	UBE2D2; ubiquitin-conjugating enzyme E2D 2; ubiquitin conjugating enzyme E2D 2 (homologous to yeast UBC4/5), ubiquitin conjugating enzyme E2D 2 (UBC4/5 homolog, yeast); ubiquitin-conjugating enzyme E2 D2; UBC4; Ubch5B; ubiquitin-protein ligase D2; ubiquitin carrier protein D2; ubiquitin-conjugating enzyme E2(17)KB 2; ubiquitin-conjugating enzyme E2-17 kDa 2; ubiquitin-conjugating enzyme E2D 2 (UBC4/5 homolog, yeast); ubiquitin-conjugating enzyme E2D 2 (homologous to yeast UBC4/5); PUBC1; UBC4/5; UBCH5B; E2(17)KB2;
Gene ID	7322
mRNA Refseq	NM_003339

 Tel: 1-631-559-9269 1-516-512-3133

 Email: info@creative-biomart.com  Fax: 1-631-938-8127

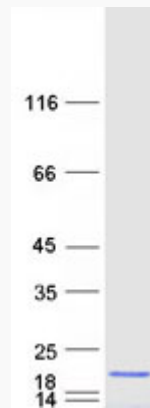
 45-1 Ramsey Road, Shirley, NY 11967, USA

Protein Refseq NP_003330

MIM 602962

UniProt ID P62837

SDS-PAGE



 Tel: 1-631-559-9269 1-516-512-3133

 Email: info@creative-biomart.com  Fax: 1-631-938-8127

 45-1 Ramsey Road, Shirley, NY 11967, USA