

# Recombinant Human UBE2D2 Protein, Myc/DDK-tagged, C13 and N15-labeled

**Cat. No.** UBE2D2-6315H    **Lot. No.** (See product label)

## SPECIFICATION

<b>Product Overview</b>	UBE2D2 MS Standard C13 and N15-labeled recombinant protein (NP_862821) with a C-terminal MYC/DDK tag, was expressed in HEK293 cells.
<b>Species</b>	Human
<b>Source</b>	HEK293
<b>Description</b>	Regulated degradation of misfolded, damaged or short-lived proteins in eukaryotes occurs via the ubiquitin (Ub)-proteasome system (UPS). An integral part of the UPS system is the ubiquitination of target proteins and covalent linkage of Ub-containing proteins to form polymeric chains, marking them as targets for 26S proteasome-mediated degradation. Ubiquitination of proteins is mediated by a cascade of enzymes which includes E1 (ubiquitin activating), E2 (ubiquitin conjugating), and E3 (ubiquitin ligases) enzymes. This gene encodes a member of the E2 enzyme family. Substrates of this enzyme include the tumor suppressor protein p53 and peroxisomal biogenesis factor 5 (PEX5). Alternative splicing results in multiple transcript variants of this gene.
<b>Molecular Mass</b>	13.5 kDa
<b>AA Sequence</b>	MALKRIHKELNDLARDPPAQCSAGPVGDDMFHWQATIMGPNDSPYQGGVFFLTIHF PTDYPFKPPKVAFTTRIIYHPNINSNGSICLDILRSQWSPALTISKVLLSICLLCDPNPD DPLVPEIARIYKTDREKYNRIAREWTQKYAMTRTRPLEQKLISEEDLAANDILDYKDD

 Tel: 1-631-559-9269    1-516-512-3133

 Email: [info@creative-biomart.com](mailto:info@creative-biomart.com)     Fax: 1-631-938-8127

 45-1 Ramsey Road, Shirley, NY 11967, USA

	DDKV
<b>Purity</b>	> 80% as determined by SDS-PAGE and Coomassie blue staining
<b>Stability</b>	Stable for 3 months from receipt of products under proper storage and handling conditions.
<b>Storage</b>	Store at -80 centigrade. Avoid repeated freeze-thaw cycles.
<b>Concentration</b>	50 µg/mL as determined by BCA
<b>Storage Buffer</b>	100 mM glycine, 25 mM Tris-HCl, pH 7.3.
<b>GENE INFORMATION</b>	
<b>Gene Name</b>	UBE2D2 ubiquitin-conjugating enzyme E2D 2 [ Homo sapiens (human) ]
<b>Official Symbol</b>	UBE2D2
<b>Synonyms</b>	UBE2D2; ubiquitin-conjugating enzyme E2D 2; ubiquitin conjugating enzyme E2D 2 (homologous to yeast UBC4/5), ubiquitin conjugating enzyme E2D 2 (UBC4/5 homolog, yeast); ubiquitin-conjugating enzyme E2 D2; UBC4; Ubch5B; ubiquitin-protein ligase D2; ubiquitin carrier protein D2; ubiquitin-conjugating enzyme E2(17)KB 2; ubiquitin-conjugating enzyme E2-17 kDa 2; ubiquitin-conjugating enzyme E2D 2 (UBC4/5 homolog, yeast); ubiquitin-conjugating enzyme E2D 2 (homologous to yeast UBC4/5); PUBC1; UBC4/5; UBCH5B; E2(17)KB2;
<b>Gene ID</b>	7322
<b>mRNA Refseq</b>	NM_181838

 Tel: 1-631-559-9269 1-516-512-3133

 Email: [info@creative-biomart.com](mailto:info@creative-biomart.com)  Fax: 1-631-938-8127

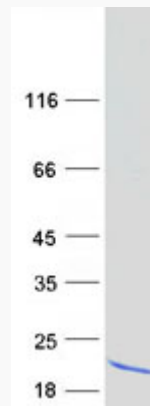
 45-1 Ramsey Road, Shirley, NY 11967, USA

**Protein Refseq** NP\_862821

**MIM** 602962

**UniProt ID** P62837

**SDS-PAGE**



 Tel: 1-631-559-9269 1-516-512-3133

 Email: [info@creative-biomart.com](mailto:info@creative-biomart.com)  Fax: 1-631-938-8127

 45-1 Ramsey Road, Shirley, NY 11967, USA