

Active Recombinant Human UBE2D2 Protein, His-tagged

Cat. No. UBE2D2-645H Lot. No. (See product label)

SPECIFICATION

Product Overview	Recombinant Human UBE2D2 fused with His tag at N-terminal was expressed in E. coli.
Species	Human
Source	E.coli
Description	UBE2D2(UBC4) Protein or ubiquitin-conjugating enzyme E2D2 is a member of the E2 ubiquitin-conjugating enzyme family which functions in the ubiquitination of the tumor-suppressor protein p53, which is induced by an E3 ubiquitin-protein ligase. UBE2D2 specifically ubiquitinates E6AP and in vivo inhibition of UBE2D2 can lead to inhibition of E6-stimulated p53 degradation (1). UBE2D2 could conjugate ubiquitin to target proteins in an E6AP-dependent manner.
Form	50mM sodium phosphate, pH 7.0, 300mM NaCl, 150mM imidazole, 0.1mM PMSF, 0.25mM DTT, 25% glycerol.
Bio-activity	25 nmol/min/mg
Molecular Mass	17 kDa
Purity	>95%
Applications	Ubiquitin Enzyme Assay, Western Blot

 Tel: 1-631-559-9269 1-516-512-3133

 Email: info@creative-biomart.com  Fax: 1-631-938-8127

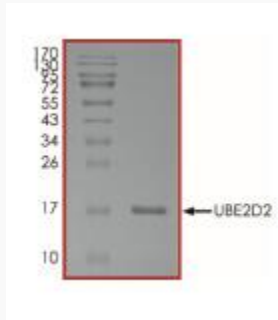
 45-1 Ramsey Road, Shirley, NY 11967, USA

Stability	1 year at - 70 centigrade from the date of shipment.
Storage	Store product at –70 centigrade. For optimal storage, aliquot target into smaller quantities after centrifugation and store at recommended temperature. For most favorable performance, avoid repeated handling and multiple freeze/thaw cycles.
Concentration	0.1 ug/ml
GENE INFORMATION	
Gene Name	UBE2D2 ubiquitin-conjugating enzyme E2D 2 [Homo sapiens]
Official Symbol	UBE2D2
Synonyms	UBE2D2; ubiquitin-conjugating enzyme E2D 2; ubiquitin conjugating enzyme E2D 2 (homologous to yeast UBC4/5) , ubiquitin conjugating enzyme E2D 2 (UBC4/5 homolog, yeast); ubiquitin-conjugating enzyme E2 D2; UBC4; Ubch5B; ubiquitin-protein ligase D2; ubiquitin carrier protein D2; ubiquitin-conjugating enzyme E2(17)KB 2; ubiquitin-conjugating enzyme E2-17 kDa 2; ubiquitin-conjugating enzyme E2D 2 (UBC4/5 homolog, yeast); ubiquitin-conjugating enzyme E2D 2 (homologous to yeast UBC4/5); PUBC1; UBC4/5; UBCH5B; E2(17)KB2;
Gene ID	7322
mRNA Refseq	NM_003339
Protein Refseq	NP_003330
MIM	602962
UniProt ID	P62837

 Tel: 1-631-559-9269 1-516-512-3133

 Email: info@creative-biomart.com  Fax: 1-631-938-8127

 45-1 Ramsey Road, Shirley, NY 11967, USA



 Tel: 1-631-559-9269 1-516-512-3133

 Email: info@creative-biomart.com  Fax: 1-631-938-8127

 45-1 Ramsey Road, Shirley, NY 11967, USA