

## Recombinant Full Length Human UBE2D2 Protein

Cat. No. UBE2D2-67H Lot. No. (See product label)

### SPECIFICATION

<b>Product Overview</b>	Recombinant human UBE2D2 protein (1-147aa) without tag was expressed in E.coli.
<b>Species</b>	Human
<b>Source</b>	E.coli
<b>ProteinLength</b>	1-147 a.a.
<b>Description</b>	<p>Regulated degradation of misfolded, damaged or short-lived proteins in eukaryotes occurs via the ubiquitin (Ub)-proteasome system (UPS). An integral part of the UPS system is the ubiquitination of target proteins and covalent linkage of Ub-containing proteins to form polymeric chains, marking them as targets for 26S proteasome-mediated degradation. Ubiquitination of proteins is mediated by a cascade of enzymes which includes E1 (ubiquitin activating), E2 (ubiquitin conjugating), and E3 (ubiquitin ligases) enzymes. This gene encodes a member of the E2 enzyme family. Substrates of this enzyme include the tumor suppressor protein p53 and peroxisomal biogenesis factor 5 (PEX5). Alternative splicing results in multiple transcript variants of this gene.</p>
<b>Form</b>	Liquid
<b>Molecular Mass</b>	16.7 kDa
<b>AA Sequence</b>	<p>MALKRIHKELNDLARDPPAQCSAGPVGDDMFHWQATIMGPNDSFYQGGVFFLTIHF PTDYPFKPPKVAFTTRIIYHPNINSNGSICLDILRSQWSPALTISKVLLSICSLLCDPNPD</p>

 Tel: 1-631-559-9269 1-516-512-3133

 Email: [info@creative-biomart.com](mailto:info@creative-biomart.com)  Fax: 1-631-938-8127

 45-1 Ramsey Road, Shirley, NY 11967, USA

DPLVPEIARIYKTDREKYNRIAREWTQKYAM

**Purity** > 95% by SDS - PAGE

**Storage** Can be stored at +4 centigrade short term (1-2 weeks). For long term storage, aliquot and store at -20 centigrade or -70 centigrade. Avoid repeated freezing and thawing cycles.

**Concentration** 0.5mg/mL

**Storage Buffer** In 20mM MES (pH6.0) containing 50mM NaCl, 1mM DTT

## GENE INFORMATION

**Gene Name** [UBE2D2 ubiquitin conjugating enzyme E2 D2 \[ Homo sapiens \(human\) \]](#)

**Official Symbol** [UBE2D2](#)

**Synonyms** UBC4; PUBC1; UBCH4; UBC4/5; UBCH5B; E2(17)KB2; ubiquitin-conjugating enzyme E2 D2; (E3-independent) E2 ubiquitin-conjugating enzyme D2; E2 ubiquitin-conjugating enzyme D2; p53-regulated ubiquitin-conjugating enzyme 1; ubiquitin carrier protein D2; ubiquitin conjugating enzyme E2D 2; ubiquitin-conjugating enzyme E2-17 kDa 2; ubiquitin-conjugating enzyme E2D 2 (homologous to yeast UBC4/5); ubiquitin-protein ligase D2; EC 2.3.2.23; EC 2.3.2.24

**Gene ID** [7322](#)

**mRNA Refseq** [NM\\_003339](#)

**Protein Refseq** [NP\\_003330](#)

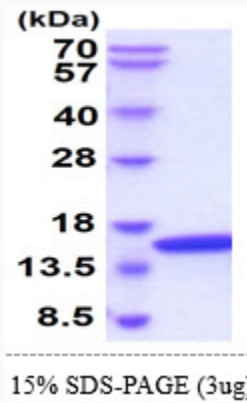
 Tel: 1-631-559-9269 1-516-512-3133

 Email: [info@creative-biomart.com](mailto:info@creative-biomart.com)  Fax: 1-631-938-8127

 45-1 Ramsey Road, Shirley, NY 11967, USA

**MIM** 602962

**UniProt ID** P62837



 Tel: 1-631-559-9269 1-516-512-3133

 Email: [info@creative-biomart.com](mailto:info@creative-biomart.com)  Fax: 1-631-938-8127

 45-1 Ramsey Road, Shirley, NY 11967, USA