

## Recombinant Human UBE2D2 protein, His-tagged

Cat. No. UBE2D2-7405H Lot. No. (See product label)

### SPECIFICATION

<b>Product Overview</b>	Recombinant Human UBE2D2 protein(P62837)(162aa), fused with N-terminal His tag, was expressed in E. coli.
<b>Species</b>	Human
<b>Source</b>	E.coli
<b>Protein Length</b>	162aa(including fusion tag)
<b>Tag</b>	N-His
<b>Form</b>	20mM Tris.Cl, 50mM NaCl, 50% Glycerol, pH9.0.
<b>Molecular Mass</b>	18.6kDa(including fusion tag)
<b>Storage</b>	Store at -80°C and avoid repeated freeze-thaw cycles.
<b>Reconstitution</b>	It is recommended that sterile water be added to the vial to prepare a stock solution of 0.2 ug/ul. Centrifuge the vial at 4°C before opening to recover the entire contents.

### GENE INFORMATION

<b>Gene Name</b>	UBE2D2 ubiquitin-conjugating enzyme E2D 2 [ Homo sapiens ]
<b>Official Symbol</b>	UBE2D2

 Tel: 1-631-559-9269 1-516-512-3133

 Email: [info@creative-biomart.com](mailto:info@creative-biomart.com)  Fax: 1-631-938-8127

 45-1 Ramsey Road, Shirley, NY 11967, USA

**Synonyms** UBE2D2; ubiquitin-conjugating enzyme E2D 2; ubiquitin conjugating enzyme E2D 2 (homologous to yeast UBC4/5) , ubiquitin conjugating enzyme E2D 2 (UBC4/5 homolog, yeast); ubiquitin-conjugating enzyme E2 D2; UBC4; Ubch5B; ubiquitin-protein ligase D2; ubiquitin carrier protein D2; ubiquitin-conjugating enzyme E2(17)KB 2; ubiquitin-conjugating enzyme E2-17 kDa 2; ubiquitin-conjugating enzyme E2D 2 (UBC4/5 homolog, yeast); ubiquitin-conjugating enzyme E2D 2 (homologous to yeast UBC4/5); PUBC1; UBC4/5; UBCH5B; E2(17)KB2;

**Gene ID** [7322](#)

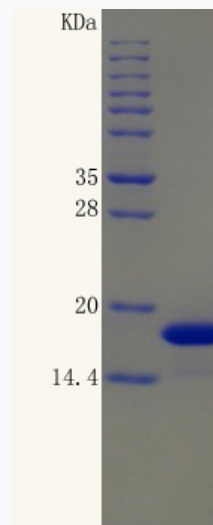
**mRNA Refseq** [NM\\_003339](#)

**Protein Refseq** [NP\\_003330](#)

**MIM** [602962](#)

**UniProt ID** [P62837](#)

**SDS-PAGE**



 Tel: 1-631-559-9269 1-516-512-3133

 Email: [info@creative-biomart.com](mailto:info@creative-biomart.com)  Fax: 1-631-938-8127

 45-1 Ramsey Road, Shirley, NY 11967, USA