

Recombinant Human UBE2D4 protein, His-tagged

Cat. No. UBE2D4-3022H Lot. No. (See product label)

SPECIFICATION

Product Overview	Recombinant Human UBE2D4protein(Q9Y2X8)(162aa), fused with N-terminal His tag, was expressed in E. coli.
Species	Human
Source	E.coli
ProteinLength	162aa(including fusion tag)
Tag	N-His
Form	20mM Tris.Cl, 50mM NaCl, 50% Glycerol, pH9.0.
Molecular Mass	18.6kDa(including fusion tag)
Storage	Store at -80°C and avoid repeated freeze-thaw cycles.
Reconstitution	It is recommended that sterile water be added to the vial to prepare a stock solution of 0.2 ug/ul. Centrifuge the vial at 4°C before opening to recover the entire contents.

GENE INFORMATION

Gene Name	UBE2D4 ubiquitin-conjugating enzyme E2D 4 (putative) [Homo sapiens]
Official Symbol	UBE2D4

 Tel: 1-631-559-9269 1-516-512-3133

 Email: info@creative-biomart.com  Fax: 1-631-938-8127

 45-1 Ramsey Road, Shirley, NY 11967, USA

Synonyms UBE2D4; ubiquitin-conjugating enzyme E2D 4 (putative); ubiquitin-conjugating enzyme E2 D4; HBUCE1; ubiquitin-protein ligase D4; ubiquitin carrier protein D4; ubiquitin-conjugating enzyme HBUCE1; FLJ32004;

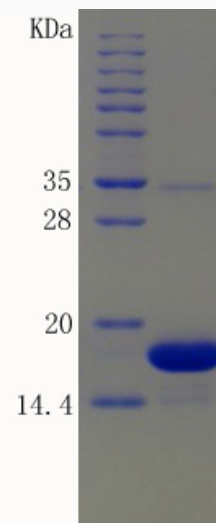
Gene ID [51619](#)

mRNA Refseq [NM_015983](#)

Protein Refseq [NP_057067](#)

UniProt ID [Q9Y2X8](#)

SDS-PAGE



 Tel: 1-631-559-9269 1-516-512-3133

 Email: info@creative-biomart.com  Fax: 1-631-938-8127

 45-1 Ramsey Road, Shirley, NY 11967, USA