

# Recombinant Human UBE2D4 Protein, Myc/DDK-tagged, C13 and N15-labeled

**Cat. No.** UBE2D4-4219H    **Lot. No.** (See product label)

## SPECIFICATION

|                         |  |
|-------------------------|--|
| <b>Product Overview</b> | UBE2D4 MS Standard C13 and N15-labeled recombinant protein (NP_057067) with a C-terminal MYC/DDK tag, was expressed in HEK293 cells.   |
| <b>Species</b>          | Human  |
| <b>Source</b>           | HEK293   |
| <b>Description</b>      | Accepts ubiquitin from the E1 complex and catalyzes its covalent attachment to other proteins. In vitro able to promote polyubiquitination using all 7 ubiquitin Lys residues, but may prefer 'Lys-11' and 'Lys-48'-linked polyubiquitination. |
| <b>Molecular Mass</b>   | 16.5 kDa   |
| <b>AA Sequence</b>      | MAVKRIQKELTDLQRDPPAQCSAGPVGDDLFWQATIMGPNDSPYQGGVFFLTIHF<br>PTDYPFKPPKVAFTTKIYHPNINSNGSICLDILRSQWSPALTVSKVLLSICSLLCDPNP<br>DDPLVPEIAHTYKADREKYNRLAREWTQKYAMTRTRPLEQKLISEEDLAANDILDYK<br>DDDDKV  |
| <b>Purity</b>           | > 80% as determined by SDS-PAGE and Coomassie blue staining  |
| <b>Stability</b>        | Stable for 3 months from receipt of products under proper storage and handling conditions.   |
| <b>Storage</b>          | Store at -80 centigrade. Avoid repeated freeze-thaw cycles.  |

 Tel: 1-631-559-9269    1-516-512-3133

 Email: [info@creative-biomart.com](mailto:info@creative-biomart.com)     Fax: 1-631-938-8127

 45-1 Ramsey Road, Shirley, NY 11967, USA

**Concentration** 50 µg/mL as determined by BCA

**Storage Buffer** 100 mM glycine, 25 mM Tris-HCl, pH 7.3.

## GENE INFORMATION

**Gene Name** UBE2D4 ubiquitin conjugating enzyme E2 D4 (putative) [ Homo sapiens (human) ]

**Official Symbol** UBE2D4

**Synonyms** UBE2D4; ubiquitin-conjugating enzyme E2D 4 (putative); ubiquitin-conjugating enzyme E2 D4; HBUCE1; ubiquitin-protein ligase D4; ubiquitin carrier protein D4; ubiquitin-conjugating enzyme HBUCE1; FLJ32004;

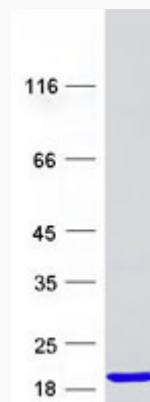
**Gene ID** 51619

**mRNA Refseq** NM\_015983

**Protein Refseq** NP\_057067

**UniProt ID** Q9Y2X8

### SDS-PAGE



Tel: 1-631-559-9269 1-516-512-3133

Email: [info@creative-biomart.com](mailto:info@creative-biomart.com) Fax: 1-631-938-8127

45-1 Ramsey Road, Shirley, NY 11967, USA