

## Active Recombinant Human UBE2E3 Protein, His-tagged

Cat. No. UBE2E3-647H Lot. No. (See product label)

### SPECIFICATION

<b>Product Overview</b>	Recombinant Human UBE2E3 fused with His tag at N-terminal was expressed in E. coli.
<b>Species</b>	Human
<b>Source</b>	E.coli
<b>Description</b>	UBE2E3 also known as UBCH9 or ubiquitin-conjugating enzyme E2E 3 is a member of the E2 ubiquitin-conjugating enzyme family. UBE2E3 is highly expressed in skeletal muscle. UBE2E3 is essential for the proliferation of RPE-1 cells and is downregulated during RPE layer maturation in the developing mouse eye. These findings indicate that UBE2E3 is a major enzyme in modulating the balance between RPE cell proliferation and differentiation.
<b>Form</b>	50mM sodium phosphate, pH 7.0, 300mM NaCl, 150mM imidazole, 0.1mM PMSF, 0.25mM DTT, 25% glycerol.
<b>Bio-activity</b>	17 nmol/min/mg
<b>Molecular Mass</b>	25 kDa
<b>Purity</b>	>95%
<b>Applications</b>	Ubiquitin Enzyme Assay, Western Blot

 Tel: 1-631-559-9269 1-516-512-3133

 Email: [info@creative-biomart.com](mailto:info@creative-biomart.com)  Fax: 1-631-938-8127

 45-1 Ramsey Road, Shirley, NY 11967, USA

<b>Stability</b>	1 year at - 70 centigrade from the date of shipment.
<b>Storage</b>	Store product at –70 centigrade. For optimal storage, aliquot target into smaller quantities after centrifugation and store at recommended temperature. For most favorable performance, avoid repeated handling and multiple freeze/thaw cycles.
<b>Concentration</b>	0.1 ug/ml

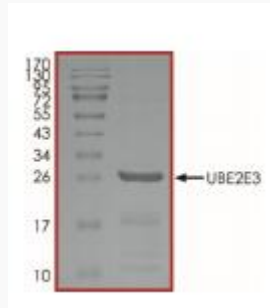
## GENE INFORMATION

<b>Gene Name</b>	UBE2E3 ubiquitin-conjugating enzyme E2E 3 [ Homo sapiens ]
<b>Official Symbol</b>	UBE2E3
<b>Synonyms</b>	UBE2E3; ubiquitin-conjugating enzyme E2E 3; ubiquitin conjugating enzyme E2E 3 (homologous to yeast UBC4/5) , ubiquitin conjugating enzyme E2E 3 (UBC4/5 homolog, yeast); ubiquitin-conjugating enzyme E2 E3; Ubch9; ubiquitin-protein ligase E3; ubiquitin carrier protein E3; ubiquitin-conjugating enzyme E2-23 kDa; ubiquitin-conjugating enzyme E2E 3 (UBC4/5 homolog, yeast); ubiquitin-conjugating enzyme E2E 3 (homologous to yeast UBC4/5); UBCH9; UbcM2;
<b>Gene ID</b>	10477
<b>mRNA Refseq</b>	NM_006357
<b>Protein Refseq</b>	NP_006348
<b>MIM</b>	604151
<b>UniProt ID</b>	Q969T4

 Tel: 1-631-559-9269 1-516-512-3133

 Email: [info@creative-biomart.com](mailto:info@creative-biomart.com)  Fax: 1-631-938-8127

 45-1 Ramsey Road, Shirley, NY 11967, USA



 Tel: 1-631-559-9269 1-516-512-3133

 Email: [info@creative-biomart.com](mailto:info@creative-biomart.com)  Fax: 1-631-938-8127

 45-1 Ramsey Road, Shirley, NY 11967, USA