

Recombinant Human UBE2F protein, GST-tagged

Cat. No. UBE2F-3533H Lot. No. (See product label)

SPECIFICATION

Product Overview	Recombinant Human UBE2F protein(1-185 aa), fused with N-terminal GST tag, was expressed in E. coli.
Species	Human
Source	E.coli
ProteinLength	1-185 aa
Form	The purified protein was Lyophilized from sterile PBS (58mM Na ₂ HPO ₄ , 17mM NaH ₂ PO ₄ , 68mM NaCl, pH7.4). 5 % trehalose and 5 % mannitol are added as protectant before lyophilization.
Storage	Short-term storage: Store at 2-8°C for (1-2 weeks). Long-term storage: Aliquot and store at -20°C to -80°C for up to 3 months, reconstitution with sterile water and addition of an equal volume of glycerol. Avoid repeat freeze-thaw cycles.
AA Sequence	MLTLASKLKRDDGLKGSRTAATASDSTRRVSVRDKLLVKEVAELEANLPCTCKVHFP DPNKLHCFQLTVPDEGYQQGGKQFETEVDPDAYNMVPPKVKCLTKIWHPNITETG EICLSLLREHSIDGTGWAPTRTLKDVVWGLNSLFTDLLNFDDPLNIEAAEHHLRDKED FRNKVDDYIKRYAR
Purity	85%, by SDS-PAGE with Coomassie Brilliant Blue staining.

GENE INFORMATION

 Tel: 1-631-559-9269 1-516-512-3133

 Email: info@creative-biomart.com  Fax: 1-631-938-8127

 45-1 Ramsey Road, Shirley, NY 11967, USA

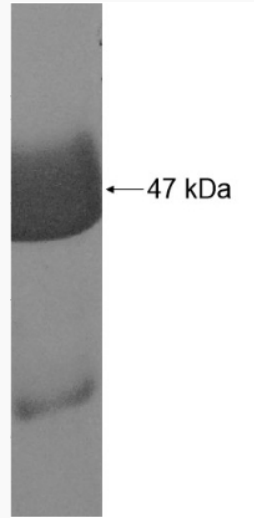
Official Symbol UBE2F

Synonyms UBE2F; ubiquitin-conjugating enzyme E2F (UBC6 homolog, *C. elegans*); NCE2;
NEDD8 conjugating enzyme;

Gene ID 23665

UniProt ID Q969M7

SDS-PAGE



 Tel: 1-631-559-9269 1-516-512-3133

 Email: info@creative-biomart.com  Fax: 1-631-938-8127

 45-1 Ramsey Road, Shirley, NY 11967, USA