

## Recombinant Human UBE2F protein, His-tagged

Cat. No. UBE2F-4477H Lot. No. (See product label)

### SPECIFICATION

<b>Product Overview</b>	Recombinant Human UBE2F protein(Q969M7)(200aa), fused with N-terminal His tag, was expressed in E. coli.
<b>Species</b>	Human
<b>Source</b>	E.coli
<b>Protein Length</b>	200aa(including fusion tag)
<b>Tag</b>	N-His
<b>Form</b>	20mM Tris, 50mM NaCl, 50%glycerol, 1mM DTT, pH8.0.
<b>Molecular Mass</b>	23kDa(including fusion tag)
<b>Storage</b>	Store at -80°C and avoid repeated freeze-thaw cycles.
<b>Reconstitution</b>	It is recommended that sterile water be added to the vial to prepare a stock solution of 0.2 ug/ul. Centrifuge the vial at 4°C before opening to recover the entire contents.

### GENE INFORMATION

**Gene Name** UBE2F ubiquitin-conjugating enzyme E2F (UBC6 homolog, *C. elegans*) [ [Homo sapiens](#) ]

 Tel: 1-631-559-9269 1-516-512-3133

 Email: [info@creative-biomart.com](mailto:info@creative-biomart.com)  Fax: 1-631-938-8127

 45-1 Ramsey Road, Shirley, NY 11967, USA

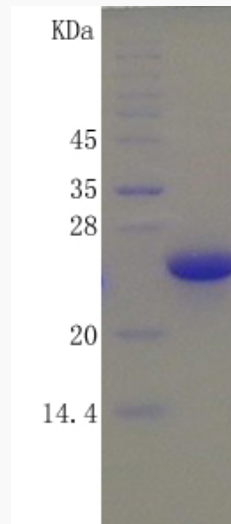
**Official Symbol** UBE2F

**Synonyms** UBE2F; ubiquitin-conjugating enzyme E2F (UBC6 homolog, *C. elegans*); NCE2; NEDD8 conjugating enzyme;

**Gene ID** 23665

**UniProt ID** Q969M7

**SDS-PAGE**



 Tel: 1-631-559-9269 1-516-512-3133

 Email: [info@creative-biomart.com](mailto:info@creative-biomart.com)  Fax: 1-631-938-8127

 45-1 Ramsey Road, Shirley, NY 11967, USA