

# Recombinant Human UBE2F Protein, Myc/DDK-tagged, C13 and N15-labeled

Cat. No. UBE2F-4680H Lot. No. (See product label)

## SPECIFICATION

<b>Product Overview</b>	UBE2F MS Standard C13 and N15-labeled recombinant protein (NP_542409) with a C-terminal MYC/DDK tag, was expressed in HEK293 cells.
<b>Species</b>	Human
<b>Source</b>	HEK293
<b>Description</b>	UBE2F (Ubiquitin Conjugating Enzyme E2 F (Putative)) is a Protein Coding gene. Diseases associated with UBE2F include Brachydactyly, Type E2. Among its related pathways are Remodeling of Adherens Junctions and Innate Immune System. Gene Ontology (GO) annotations related to this gene include ligase activity and ubiquitin protein ligase activity. An important paralog of this gene is UBE2F-SCLY.
<b>Molecular Mass</b>	20.9 kDa
<b>AA Sequence</b>	MLTLASKLKRDDGLKGSRTAATASDSTRRVSVRDKLLVKEVAELEANLPCTCKVHFP DPNKLHCFQLTVTPDEGYQQGGKFQFETEVPDAYNMVPPKVKCLTKIWHPNITETG EICLSLLREHSIDGTGWAPTRTLKDVVWGLNSLFTDLLNFDDPLNIEAAEHHLRDKED FRNKVDDYIKRYARTRTRPLEQKLISEEDLAANDILDYKDDDDKV
<b>Purity</b>	> 80% as determined by SDS-PAGE and Coomassie blue staining
<b>Stability</b>	Stable for 3 months from receipt of products under proper storage and handling conditions.

 Tel: 1-631-559-9269 1-516-512-3133

 Email: [info@creative-biomart.com](mailto:info@creative-biomart.com)  Fax: 1-631-938-8127

 45-1 Ramsey Road, Shirley, NY 11967, USA

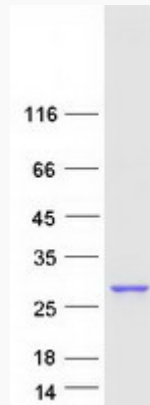
<b>Storage</b>	Store at -80 centigrade. Avoid repeated freeze-thaw cycles.
<b>Concentration</b>	50 µg/mL as determined by BCA
<b>Storage Buffer</b>	100 mM glycine, 25 mM Tris-HCl, pH 7.3.
<b>GENE INFORMATION</b>	
<b>Gene Name</b>	UBE2F ubiquitin conjugating enzyme E2 F (putative) [ Homo sapiens (human) ]
<b>Official Symbol</b>	UBE2F
<b>Synonyms</b>	UBE2F; ubiquitin conjugating enzyme E2 F (putative); NCE2; NEDD8-conjugating enzyme UBE2F; NEDD8 carrier protein UBE2F; NEDD8 protein ligase UBE2F; NEDD8-conjugating enzyme 2; RING-type E3 NEDD8 transferase UBE2F; ubiquitin-conjugating enzyme E2F (putative); EC 2.3.2.32
<b>Gene ID</b>	140739
<b>mRNA Refseq</b>	NM_080678
<b>Protein Refseq</b>	NP_542409
<b>MIM</b>	617700
<b>UniProt ID</b>	Q969M7

 Tel: 1-631-559-9269 1-516-512-3133

 Email: [info@creative-biomart.com](mailto:info@creative-biomart.com)  Fax: 1-631-938-8127

 45-1 Ramsey Road, Shirley, NY 11967, USA

**SDS-PAGE**



 Tel: 1-631-559-9269 1-516-512-3133

 Email: [info@creative-biomart.com](mailto:info@creative-biomart.com)  Fax: 1-631-938-8127

 45-1 Ramsey Road, Shirley, NY 11967, USA