

Recombinant Human UBE2G1 protein, His-tagged

Cat. No. UBE2G1-2444H Lot. No. (See product label)

SPECIFICATION

Product Overview	Recombinant Human UBE2G1 protein(P62253)(185aa), fused with N-terminal His tag, was expressed in E. coli.
Species	Human
Source	E.coli
Protein Length	185aa(including fusion tag)
Tag	N-His
Molecular Mass	21.4kDa(including fusion tag)
Reconstitution	It is recommended that sterile water be added to the vial to prepare a stock solution of 0.2 ug/ul. Centrifuge the vial at 4°C before opening to recover the entire contents.

GENE INFORMATION

Gene Name	UBE2G1 ubiquitin-conjugating enzyme E2G 1 [Homo sapiens]
Official Symbol	UBE2G1
Synonyms	UBE2G1; ubiquitin-conjugating enzyme E2G 1; UBE2G, ubiquitin conjugating enzyme E2G 1 (homologous to C. elegans UBC7) , ubiquitin conjugating enzyme E2G 1 (UBC7 homolog, C. elegans) , ubiquitin conjugating enzyme E2G 1 (UBC7 homolog,

 Tel: 1-631-559-9269 1-516-512-3133

 Email: info@creative-biomart.com  Fax: 1-631-938-8127

 45-1 Ramsey Road, Shirley, NY 11967, USA

yeast); ubiquitin-conjugating enzyme E2 G1; UBC7; ubiquitin-protein ligase G1; ubiquitin carrier protein G1; ubiquitin-conjugating enzyme E2G 1 (UBC7 homolog, yeast); ubiquitin-conjugating enzyme E2G 1 (UBC7 homolog, C. elegans); ubiquitin-conjugating enzyme E2G 1 (homologous to C. elegans UBC7); E217K; UBE2G;

Gene ID 7326

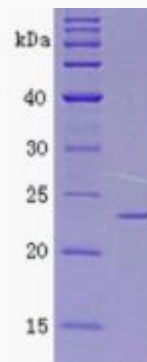
mRNA Refseq NM_003342

Protein Refseq NP_003333

MIM 601569

UniProt ID P62253

SDS-PAGE



 Tel: 1-631-559-9269 1-516-512-3133

 Email: info@creative-biomart.com  Fax: 1-631-938-8127

 45-1 Ramsey Road, Shirley, NY 11967, USA