

Active Recombinant Human UBE2G1 Protein, His-tagged

Cat. No. UBE2G1-648H Lot. No. (See product label)

SPECIFICATION

Product Overview	Recombinant Human UBE2G1 fused with His tag at N-terminal was expressed in E. coli.
Species	Human
Source	E.coli
Description	UBE2G1 (UBC7) or ubiquitin-conjugating enzyme E2G 1 is a member of the E2 ubiquitin-conjugating enzyme family and catalyzes the covalent attachment of ubiquitin to other proteins which are involved in degradation of muscle-specific proteins. UBC7 is highly expressed in skeletal muscle. UBC7 is involved in the selective ubiquitylation of different substrates by the same E3 complex.
Form	50mM sodium phosphate, pH 7.0, 300mM NaCl, 150mM imidazole, 0.1mM PMSF, 0.25mM DTT, 25% glycerol.
Bio-activity	11 nmol/min/mg
Molecular Mass	21 kDa
Purity	>95%
Applications	Ubiquitin Enzyme Assay, Western Blot
Stability	1 year at - 70 centigrade from the date of shipment.

 Tel: 1-631-559-9269 1-516-512-3133

 Email: info@creative-biomart.com  Fax: 1-631-938-8127

 45-1 Ramsey Road, Shirley, NY 11967, USA

Storage Store product at –70 centigrade. For optimal storage, aliquot target into smaller quantities after centrifugation and store at recommended temperature. For most favorable performance, avoid repeated handling and multiple freeze/thaw cycles.

Concentration 0.1 ug/ml

GENE INFORMATION

Gene Name [UBE2G1 ubiquitin-conjugating enzyme E2G 1 \[Homo sapiens \]](#)

Official Symbol [UBE2G1](#)

Synonyms UBE2G1; ubiquitin-conjugating enzyme E2G 1; UBE2G, ubiquitin conjugating enzyme E2G 1 (homologous to C. elegans UBC7) , ubiquitin conjugating enzyme E2G 1 (UBC7 homolog, C. elegans) , ubiquitin conjugating enzyme E2G 1 (UBC7 homolog, yeast); ubiquitin-conjugating enzyme E2 G1; UBC7; ubiquitin-protein ligase G1; ubiquitin carrier protein G1; ubiquitin-conjugating enzyme E2G 1 (UBC7 homolog, yeast); ubiquitin-conjugating enzyme E2G 1 (UBC7 homolog, C. elegans); ubiquitin-conjugating enzyme E2G 1 (homologous to C. elegans UBC7); E217K; UBE2G;

Gene ID [7326](#)

mRNA Refseq [NM_003342](#)

Protein Refseq [NP_003333](#)

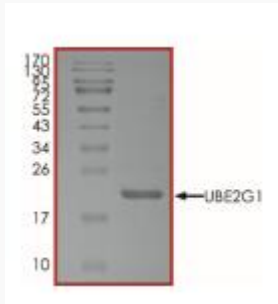
MIM [601569](#)

UniProt ID [P62253](#)

 Tel: 1-631-559-9269 1-516-512-3133

 Email: info@creative-biomart.com  Fax: 1-631-938-8127

 45-1 Ramsey Road, Shirley, NY 11967, USA



 Tel: 1-631-559-9269 1-516-512-3133

 Email: info@creative-biomart.com  Fax: 1-631-938-8127

 45-1 Ramsey Road, Shirley, NY 11967, USA