

Recombinant Human UBE2G2 protein, His-tagged

Cat. No. UBE2G2-3690H Lot. No. (See product label)

SPECIFICATION

Product Overview	Recombinant Human UBE2G2 protein(P60604)(180aa), fused with N-terminal His tag, was expressed in E. coli.
Species	Human
Source	E.coli
Protein Length	180aa(including fusion tag)
Tag	N-His
Form	20mM Tris.Cl, 50mM NaCl, 50% Glycerol, pH8.0.
Molecular Mass	20.5kDa(including fusion tag)
Storage	Store at -80°C and avoid repeated freeze-thaw cycles.
Reconstitution	It is recommended that sterile water be added to the vial to prepare a stock solution of 0.2 ug/ul. Centrifuge the vial at 4°C before opening to recover the entire contents.

GENE INFORMATION

Gene Name	UBE2G2 ubiquitin-conjugating enzyme E2G 2 [Homo sapiens]
Official Symbol	UBE2G2

 Tel: 1-631-559-9269 1-516-512-3133

 Email: info@creative-biomart.com  Fax: 1-631-938-8127

 45-1 Ramsey Road, Shirley, NY 11967, USA

Synonyms UBE2G2; ubiquitin-conjugating enzyme E2G 2; ubiquitin conjugating enzyme E2G 2 (homologous to yeast UBC7) , ubiquitin conjugating enzyme E2G 2 (UBC7 homolog, yeast); ubiquitin-conjugating enzyme E2 G2; UBC7; ubiquitin-protein ligase G2; ubiquitin carrier protein G2; ubiquitin conjugating enzyme 7; ubiquitin conjugating enzyme G2; ubiquitin-conjugating enzyme E2G 2 (UBC7 homolog, yeast); ubiquitin-conjugating enzyme E2G 2 (homologous to yeast UBC7);

Gene ID 7327

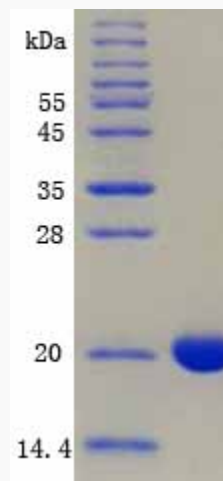
mRNA Refseq NM_001202489

Protein Refseq NP_001189418

MIM 603124

UniProt ID P60604

SDS-PAGE



 Tel: 1-631-559-9269 1-516-512-3133

 Email: info@creative-biomart.com  Fax: 1-631-938-8127

 45-1 Ramsey Road, Shirley, NY 11967, USA