

Recombinant Human UBE2I Protein, Myc/DDK-tagged, C13 and N15-labeled

Cat. No. UBE2I-2905H **Lot. No.** (See product label)

SPECIFICATION

Product Overview	UBE2I MS Standard C13 and N15-labeled recombinant protein (NP_003336) with a C-terminal MYC/DDK tag, was expressed in HEK293 cells.
Species	Human
Source	HEK293
Description	The modification of proteins with ubiquitin is an important cellular mechanism for targeting abnormal or short-lived proteins for degradation. Ubiquitination involves at least three classes of enzymes: ubiquitin-activating enzymes, or E1s, ubiquitin-conjugating enzymes, or E2s, and ubiquitin-protein ligases, or E3s. This gene encodes a member of the E2 ubiquitin-conjugating enzyme family. Four alternatively spliced transcript variants encoding the same protein have been found for this gene.
Molecular Mass	18 kDa
AA Sequence	MSGIALSRLAQERKAWRKDHPFGFVAVPTKNPDGTMNLMNWECAIPGKKGTPWEG GLFKLRMLFKDDYPSSPPKCKFEPPLFHPNVYPSGTVCLSILEEDKDWRPAITIKQILL GIQELLNEPNIQDPAQAEAYTIYCQNRVEYEKRVRQAQAKKFAPSTRTRPLEQKLISEE DLAANDILDYKDDDDKV
Purity	> 80% as determined by SDS-PAGE and Coomassie blue staining
Stability	Stable for 3 months from receipt of products under proper storage and handling

 Tel: 1-631-559-9269 1-516-512-3133

 Email: info@creative-biomart.com  Fax: 1-631-938-8127

 45-1 Ramsey Road, Shirley, NY 11967, USA

conditions.

Storage Store at -80 centigrade. Avoid repeated freeze-thaw cycles.

Concentration 50 µg/mL as determined by BCA

Storage Buffer 100 mM glycine, 25 mM Tris-HCl, pH 7.3.

GENE INFORMATION

Gene Name UBE2I ubiquitin-conjugating enzyme E2I [Homo sapiens (human)]

Official Symbol UBE2I

Synonyms

UBE2I; ubiquitin-conjugating enzyme E2I; ubiquitin conjugating enzyme E2I (homologous to yeast UBC9), ubiquitin conjugating enzyme E2I (UBC9 homolog, yeast); SUMO-conjugating enzyme UBC9; UBC9; SUMO-protein ligase; SUMO-1-protein ligase; ubiquitin-protein ligase I; ubiquitin carrier protein 9; ubiquitin carrier protein I; ubiquitin-protein ligase E2I; ubiquitin conjugating enzyme 9; ubiquitin-conjugating enzyme UbcE2A; ubiquitin-like protein SUMO-1 conjugating enzyme; ubiquitin-conjugating enzyme E2I (UBC9 homolog, yeast); ubiquitin-conjugating enzyme E2I (homologous to yeast UBC9); P18; C358B7.1;

Gene ID 7329

mRNA Refseq NM_003345

Protein Refseq NP_003336

MIM 601661

 Tel: 1-631-559-9269 1-516-512-3133

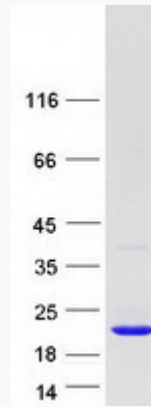
 Email: info@creative-biomart.com  Fax: 1-631-938-8127

 45-1 Ramsey Road, Shirley, NY 11967, USA

UniProt ID

P63279

SDS-PAGE



 Tel: 1-631-559-9269 1-516-512-3133

 Email: info@creative-biomart.com  Fax: 1-631-938-8127

 45-1 Ramsey Road, Shirley, NY 11967, USA