

Recombinant Human UBE2I protein, His-tagged

Cat. No. UBE2I-4522H Lot. No. (See product label)

SPECIFICATION

Product Overview	Recombinant Human UBE2I protein(P63279)(173aa), fused with N-terminal His tag, was expressed in E. coli.
Species	Human
Source	E.coli
Protein Length	173aa(including fusion tag)
Tag	N-His
Form	20mM Tris.Cl, 50mM NaCl, 20% Glycerol, pH7.0.
Molecular Mass	19.9kDa(including fusion tag)
Storage	Store at -80°C and avoid repeated freeze-thaw cycles.
Reconstitution	It is recommended that sterile water be added to the vial to prepare a stock solution of 0.2 ug/ul. Centrifuge the vial at 4°C before opening to recover the entire contents.

GENE INFORMATION

Gene Name	UBE2I ubiquitin-conjugating enzyme E2I [Homo sapiens]
Official Symbol	UBE2I

 Tel: 1-631-559-9269 1-516-512-3133

 Email: info@creative-biomart.com  Fax: 1-631-938-8127

 45-1 Ramsey Road, Shirley, NY 11967, USA

Synonyms UBE2I; ubiquitin-conjugating enzyme E2I; ubiquitin conjugating enzyme E2I (homologous to yeast UBC9) , ubiquitin conjugating enzyme E2I (UBC9 homolog, yeast); SUMO-conjugating enzyme UBC9; UBC9; SUMO-protein ligase; SUMO-1-protein ligase; ubiquitin-protein ligase I; ubiquitin carrier protein 9; ubiquitin carrier protein I; ubiquitin-protein ligase E2I; ubiquitin conjugating enzyme 9; ubiquitin-conjugating enzyme UbcE2A; ubiquitin-like protein SUMO-1 conjugating enzyme; ubiquitin-conjugating enzyme E2I (UBC9 homolog, yeast); ubiquitin-conjugating enzyme E2I (homologous to yeast UBC9); P18; C358B7.1;

Gene ID 7329

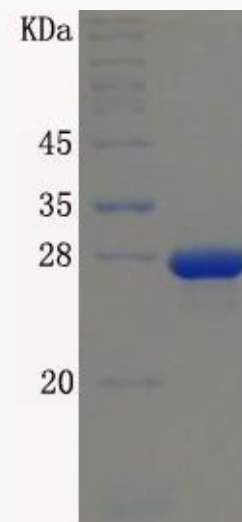
mRNA Refseq NM_003345

Protein Refseq NP_003336

MIM 601661

UniProt ID P63279

SDS-PAGE



 Tel: 1-631-559-9269 1-516-512-3133

 Email: info@creative-biomart.com  Fax: 1-631-938-8127

 45-1 Ramsey Road, Shirley, NY 11967, USA