

Recombinant Human UBE2I Protein (Asp33-Ser158), N-His tagged

Cat. No. UBE2I-6532H Lot. No. (See product label)

SPECIFICATION

Product Overview	Recombinant human UBE2I/UBC9 (Asp33-Ser158) fused with the N-His tag was expressed in E. coli.
Species	Human
Source	E.coli
ProteinLength	Asp33-Ser158
Form	Lyophilized powder/frozen liquid
Molecular Mass	16.73 kDa
Purity	> 90 % as determined by SDS-PAGE
Notes	For research use only.
Storage	Use a manual defrost freezer and avoid repeated freeze thaw cycles. Store at 2 to 8 centigrade for one week. Store at -20 to -80 centigrade for twelve months from the date of receipt.
Storage Buffer	0.01M PBS, pH 7.4, 0.02 % NLS
Reconstitution	Reconstitute in sterile water for a stock solution.

 Tel: 1-631-559-9269 1-516-512-3133

 Email: info@creative-biomart.com  Fax: 1-631-938-8127

 45-1 Ramsey Road, Shirley, NY 11967, USA

Shipping They are shipped out with dry ice/blue ice unless customers require otherwise.

GENE INFORMATION

Gene Name UBE2I ubiquitin-conjugating enzyme E2I [Homo sapiens (human)]

Official Symbol UBE2I

Synonyms

UBE2I; ubiquitin-conjugating enzyme E2I; ubiquitin conjugating enzyme E2I (homologous to yeast UBC9), ubiquitin conjugating enzyme E2I (UBC9 homolog, yeast); SUMO-conjugating enzyme UBC9; UBC9; SUMO-protein ligase; SUMO-1-protein ligase; ubiquitin-protein ligase I; ubiquitin carrier protein 9; ubiquitin carrier protein I; ubiquitin-protein ligase E2I; ubiquitin conjugating enzyme 9; ubiquitin-conjugating enzyme UbcE2A; ubiquitin-like protein SUMO-1 conjugating enzyme; ubiquitin-conjugating enzyme E2I (UBC9 homolog, yeast); ubiquitin-conjugating enzyme E2I (homologous to yeast UBC9); P18; C358B7.1;

Gene ID 7329

mRNA Refseq NM_003345

Protein Refseq NP_003336

MIM 601661

UniProt ID P63279

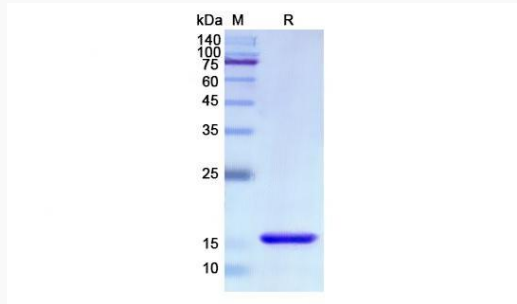
 Tel: 1-631-559-9269 1-516-512-3133

 Email: info@creative-biomart.com  Fax: 1-631-938-8127

 45-1 Ramsey Road, Shirley, NY 11967, USA



SDS-PAGE



Tel: 1-631-559-9269 1-516-512-3133

Email: info@creative-biomart.com Fax: 1-631-938-8127

45-1 Ramsey Road, Shirley, NY 11967, USA