

# Recombinant Full Length Human UBE2L3 Protein, GST tagged

Cat. No. UBE2L3-23HFL Lot. No. (See product label)

## SPECIFICATION

<b>Product Overview</b>	Human UBE2L3 full-length ORF ( AAH53368, 1 a.a. - 154 a.a.) recombinant protein with GST-tag at N-terminal was expressed in Wheat Germ (in vitro).
<b>Species</b>	Human
<b>Source</b>	Wheat Germ
<b>ProteinLength</b>	1-154aa
<b>Description</b>	The modification of proteins with ubiquitin is an important cellular mechanism for targeting abnormal or short-lived proteins for degradation. Ubiquitination involves at least three classes of enzymes: ubiquitin-activating enzymes (E1s), ubiquitin-conjugating enzymes (E2s) and ubiquitin-protein ligases (E3s). This gene encodes a member of the E2 ubiquitin-conjugating enzyme family. This enzyme is demonstrated to participate in the ubiquitination of p53, c-Fos, and the NF-kB precursor p105 in vitro. Several alternatively spliced transcript variants have been found for this gene.
<b>Tag</b>	N-GST
<b>Molecular Mass</b>	42.68 kDa
<b>AA Sequence</b>	MAASRRLMKELEEIRKCGMKNFRNIQVDEANLLTWQGLIVPDNPPYDKGAFRIEINF PAEYPFKPPKITFKTKIYHPNIDEKGVCLPVISAENWKPATKTDQVIQSLIALVNDPQ PEHPLRADLAEYSKDRKKFCKNAEEFTKKYGEKRPVD

 Tel: 1-631-559-9269 1-516-512-3133

 Email: [info@creative-biomart.com](mailto:info@creative-biomart.com)  Fax: 1-631-938-8127

 45-1 Ramsey Road, Shirley, NY 11967, USA

<b>Quality Control Testing</b>	12.5% SDS-PAGE Stained with Coomassie Blue.
<b>Applications</b>	Enzyme-linked Immunoabsorbent Assay Western Blot (Recombinant protein) Antibody Production Protein Array
<b>Notes</b>	Best use within three months from the date of receipt of this protein.
<b>Storage</b>	Store at -80 centigrade. Aliquot to avoid repeated freezing and thawing.
<b>Storage Buffer</b>	50 mM Tris-HCl, 10 mM reduced Glutathione, pH=8.0 in the elution buffer.

## GENE INFORMATION

<b>Gene Name</b>	UBE2L3 ubiquitin conjugating enzyme E2 L3 [ Homo sapiens (human) ]
<b>Official Symbol</b>	UBE2L3
<b>Synonyms</b>	UBE2L3; ubiquitin conjugating enzyme E2 L3; E2-F1; L-UBC; UBCH7; UbcM4; ubiquitin-conjugating enzyme E2 L3; E2 ubiquitin-conjugating enzyme L3; ubiquitin carrier protein L3; ubiquitin conjugating enzyme E2L 3; ubiquitin-conjugating enzyme E2-F1; ubiquitin-conjugating enzyme UBCH7; ubiquitin-protein ligase L3; EC 2.3.2.23
<b>Gene ID</b>	7332
<b>mRNA Refseq</b>	NM_003347
<b>Protein Refseq</b>	NP_003338

 Tel: 1-631-559-9269 1-516-512-3133

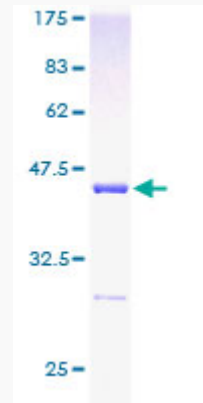
 Email: [info@creative-biomart.com](mailto:info@creative-biomart.com)  Fax: 1-631-938-8127

 45-1 Ramsey Road, Shirley, NY 11967, USA

MIM 603721

UniProt ID P68036

SDS-PAGE



 Tel: 1-631-559-9269 1-516-512-3133

 Email: [info@creative-biomart.com](mailto:info@creative-biomart.com)  Fax: 1-631-938-8127

 45-1 Ramsey Road, Shirley, NY 11967, USA