

Recombinant Human UBE2L3 protein, His-tagged

Cat. No. UBE2L3-2544H Lot. No. (See product label)

SPECIFICATION

Product Overview	Recombinant Human UBE2L3 protein(P68036)(169aa), fused with N-terminal His tag, was expressed in E. coli.
Species	Human
Source	E.coli
Protein Length	169aa(including fusion tag)
Tag	N-His
Form	20mM Tris.Cl, 50mM NaCl, 50% Glycerol, pH7.0.
Molecular Mass	19.8kDa(including fusion tag)
Storage	Store at -80°C and avoid repeated freeze-thaw cycles.
Reconstitution	It is recommended that sterile water be added to the vial to prepare a stock solution of 0.2 ug/ul. Centrifuge the vial at 4°C before opening to recover the entire contents.

GENE INFORMATION

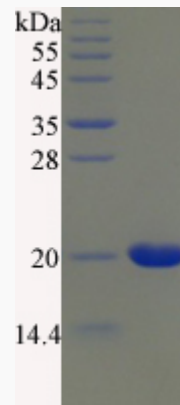
Gene Name	UBE2L3 ubiquitin-conjugating enzyme E2L 3 [Homo sapiens]
Official Symbol	UBE2L3

 Tel: 1-631-559-9269 1-516-512-3133

 Email: info@creative-biomart.com  Fax: 1-631-938-8127

 45-1 Ramsey Road, Shirley, NY 11967, USA

Synonyms	UBE2L3; ubiquitin-conjugating enzyme E2L 3; ubiquitin-conjugating enzyme E2 L3; UBCH7; ubiquitin-protein ligase L3; ubiquitin carrier protein L3; ubiquitin-conjugating enzyme E2-F1; ubiquitin-conjugating enzyme UBCH7; E2-F1; L-UBC; UbcM4;
Gene ID	7332
mRNA Refseq	NM_001256355
Protein Refseq	NP_001243284
MIM	603721
UniProt ID	P68036

SDS-PAGE

 Tel: 1-631-559-9269 1-516-512-3133

 Email: info@creative-biomart.com  Fax: 1-631-938-8127

 45-1 Ramsey Road, Shirley, NY 11967, USA