

Active Recombinant Full Length Human UBE2L3 Protein, GST tagged

Cat. No. UBE2L3-30HFL **Lot. No.** (See product label)

SPECIFICATION

Product Overview	Human UBE2L3 full-length ORF (AAH53368, 1 a.a. - 154 a.a.) recombinant protein with GST-tag at N-terminal was expressed in E. coli.
Species	Human
Source	E.coli
ProteinLength	1-154aa
Description	The modification of proteins with ubiquitin is an important cellular mechanism for targeting abnormal or short-lived proteins for degradation. Ubiquitination involves at least three classes of enzymes: ubiquitin-activating enzymes (E1s), ubiquitin-conjugating enzymes (E2s) and ubiquitin-protein ligases (E3s). This gene encodes a member of the E2 ubiquitin-conjugating enzyme family. This enzyme is demonstrated to participate in the ubiquitination of p53, c-Fos, and the NF-κB precursor p105 in vitro. Several alternatively spliced transcript variants have been found for this gene.
Tag	N-GST
Molecular Mass	~45 kDa
AA Sequence	MSPILGYWKIKGLVQPTRLLEYLEEKYEEHLYERDEGDKWRNKKFELGLEFPNLPY YIDGDVKLTQSMAIRYIADKHNLGGCPKERAEISMLEGAVLDIRYGVSR IAYSKDFE TLKVDFLSKLPEMLKMFEDRLCHKTYLNGDHVTHPDFMLYDALDVVLYMDPMCLDA

 Tel: 1-631-559-9269 1-516-512-3133

 Email: info@creative-biomart.com  Fax: 1-631-938-8127

 45-1 Ramsey Road, Shirley, NY 11967, USA

FPKLVCFKKR IEAIPQIDKYLKSSKYIAWPLQG WQATFGGGD HPPKSDLEVL FQGGL
 GSMAASRRLMKELEEIRKCGMKNFRNIQVDEANLLTWQGLIVPDNPPYDKGAFRIE I
 NFPAEYPFKPPKITFKTKIYHPNIDEKGQVCLPVISAENWK PATKTDQVIQSLIALVND
 PQPEHPLRADLAE EYSKDRKKFCKNAEEFTKKYGEKRPVD

Purity	>85% by SDS-PAGE
Stability	12 months at -70 centigrade; aliquot as required
Storage	Store at -70 centigrade.
Storage Buffer	50 mM HEPES pH 7.5, 150 mM sodium chloride, 2 mM dithiothreitol, 10% glycerol
Concentration	1 mg/mL

GENE INFORMATION

Gene Name	UBE2L3 ubiquitin conjugating enzyme E2 L3 [Homo sapiens (human)]
Official Symbol	UBE2L3
Synonyms	UBE2L3; ubiquitin conjugating enzyme E2 L3; E2-F1; L-UBC; UBCH7; UbcM4; ubiquitin-conjugating enzyme E2 L3; E2 ubiquitin-conjugating enzyme L3; ubiquitin carrier protein L3; ubiquitin conjugating enzyme E2L 3; ubiquitin-conjugating enzyme E2-F1; ubiquitin-conjugating enzyme UBCH7; ubiquitin-protein ligase L3; EC 2.3.2.23
Gene ID	7332
mRNA Refseq	NM_003347
Protein Refseq	NP_003338

 Tel: 1-631-559-9269 1-516-512-3133

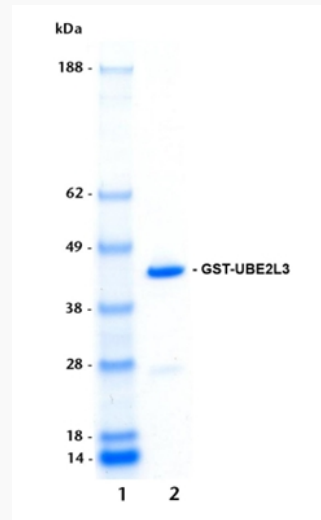
 Email: info@creative-biomart.com  Fax: 1-631-938-8127

 45-1 Ramsey Road, Shirley, NY 11967, USA

MIM 603721

UniProt ID P68036

4-12% gradient SDS-PAGE



lane 1: MW markers

lane 2: 1 µg GST-UBE2L3

 Tel: 1-631-559-9269 1-516-512-3133

 Email: info@creative-biomart.com  Fax: 1-631-938-8127

 45-1 Ramsey Road, Shirley, NY 11967, USA