

Recombinant Full Length Human Ubiquitin-conjugating Enzyme E2L 3/UBE2L3 Protein

Cat. No. UBE2L3-33H Lot. No. (See product label)

SPECIFICATION

Product Overview	Recombinant Human Ubch7(154amino acid) was over-expressed in <i>E.coli</i> and purified by using conventional chromatography techniques. MW = 17.9 kDa (154 aa).
Species	Human
Source	E.coli
ProteinLength	1-154 a.a.
Description	Human Ubiquitin-conjugating enzyme 7(Ubch7) is a ubiquitin-conjugating enzyme (E2) mediating c-fos degradation, transcription factor NF-B maturation, and human papilloma virus-mediated p53 and Myc protein degradation, in vitro. The ubiquitin-conjugating enzymes(E2s) are essential components of the post-translational protein ubiquitination pathway, mediating the transfer of activated ubiquitin to substrate proteins. The human UBE2L1-UBE2L4 gene could potentially encode different isoforms of the Ubch7. UBE2L3 gene, located at chromosome 22q11.2, is the only identical family member with introns and encodes a polypeptide sequence identical to that of Ubch7.
Amino Acid Sequence	MAASRRLMKE LEEIRKCGMK NFRNIQVDEA NLLTWQGLIV PDNPPYDKGA FRIEINFP AE YPFKPPKITF KTKIYHPNID EKGQVCLPVI SAENWKPATK TDQVIQSLIA LVNDPQPEHP LRADLAE EYS KDRKKFCKNA EEFTKKYGEK RPVD
Form	Liquid. In 50 mM HEPES (pH 7.5) containing 150 mM NaCl 1 mM DTT and 10%

 Tel: 1-631-559-9269 1-516-512-3133

 Email: info@creative-biomart.com  Fax: 1-631-938-8127

 45-1 Ramsey Road, Shirley, NY 11967, USA

	glycerol.
Purity	> 95% by SDS – PAGE.
Concentration	1 mg/ml (determined by Bradford assay).
Storage	Can be stored at +4°C short term (1-2 weeks). For long term storage, aliquot and store at -20°C or -70°C. Avoid repeated freezing and thawing cycles.

GENE INFORMATION

Gene Name	UBE2L3 ubiquitin-conjugating enzyme E2L 3 [Homo sapiens]
Synonyms	E2-F1; L-UBC; UBCH7; UbcM4; ubiquitin-conjugating enzyme E2L 3; UB2L3_HUMAN; EC 6.3.2.19; Ubiquitin-protein ligase L3; Ubiquitin carrier protein L3; UBCE7; ubiquitin carrier protein; ubiquitin-conjugating enzyme E2L3; ubiquitin-conjugating enzyme UBCH7; ubiquitin-protein ligase; UBE2L3
Gene ID	7332
mRNA Refseq	NM_003347
Protein Refseq	NP_003338
MIM	603721
UniProt ID	P68036
Chromosome Location	22q11.21

 Tel: 1-631-559-9269 1-516-512-3133

 Email: info@creative-biomart.com  Fax: 1-631-938-8127

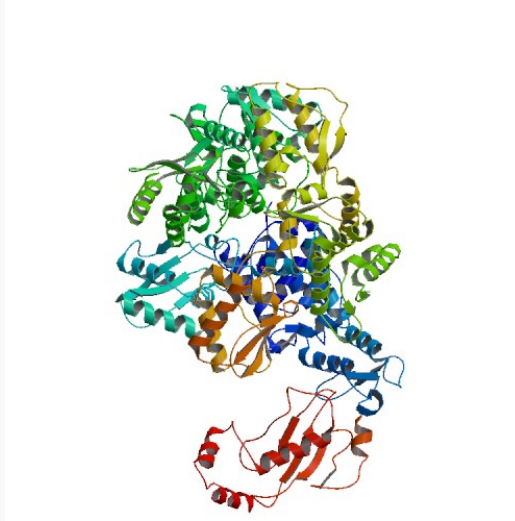
 45-1 Ramsey Road, Shirley, NY 11967, USA

Pathway Parkinson"s disease

Function

enzyme binding; ligase activity; small conjugating protein ligase activity; ubiquitin-protein ligase activity

PDB rendering based on 1c4z.



 Tel: 1-631-559-9269 1-516-512-3133

 Email: info@creative-biomart.com  Fax: 1-631-938-8127

 45-1 Ramsey Road, Shirley, NY 11967, USA