

Recombinant Human UBE2L3 Protein, Myc/DDK-tagged, C13 and N15-labeled

Cat. No. UBE2L3-4247H Lot. No. (See product label)

SPECIFICATION

Product Overview	UBE2L3 MS Standard C13 and N15-labeled recombinant protein (NP_003338) with a C-terminal MYC/DDK tag, was expressed in HEK293 cells.
Species	Human
Source	HEK293
Description	The modification of proteins with ubiquitin is an important cellular mechanism for targeting abnormal or short-lived proteins for degradation. Ubiquitination involves at least three classes of enzymes: ubiquitin-activating enzymes (E1s), ubiquitin-conjugating enzymes (E2s) and ubiquitin-protein ligases (E3s). This gene encodes a member of the E2 ubiquitin-conjugating enzyme family. This enzyme is demonstrated to participate in the ubiquitination of p53, c-Fos, and the NF-κB precursor p105 in vitro. Several alternatively spliced transcript variants have been found for this gene.
Molecular Mass	17.9 kDa
AA Sequence	MAASRRLMKELEEIRKCGMKNFRNIQVDEANLLTWQGLIVPDNPPYDKGAFRIEINF PAEYPPFKPPKITFKTKIYHPNIDEKGVCLPVISAEWKPATKTDQVIQSLIALVNDPQ PEHPLRADLAAEYSKDRKKFCKNAEEFTKKYGEKRPVDTRTRPLEQKLISEEDLAAN DILDYKDDDDKV
Purity	> 80% as determined by SDS-PAGE and Coomassie blue staining

 Tel: 1-631-559-9269 1-516-512-3133

 Email: info@creative-biomart.com  Fax: 1-631-938-8127

 45-1 Ramsey Road, Shirley, NY 11967, USA

Stability	Stable for 3 months from receipt of products under proper storage and handling conditions.
Storage	Store at -80 centigrade. Avoid repeated freeze-thaw cycles.
Concentration	50 µg/mL as determined by BCA
Storage Buffer	100 mM glycine, 25 mM Tris-HCl, pH 7.3.

GENE INFORMATION

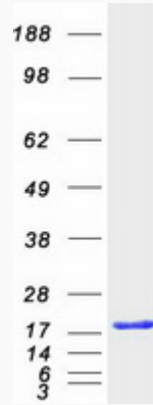
Gene Name	UBE2L3 ubiquitin-conjugating enzyme E2L 3 [Homo sapiens (human)]
Official Symbol	UBE2L3
Synonyms	UBE2L3; ubiquitin-conjugating enzyme E2L 3; ubiquitin-conjugating enzyme E2 L3; UBCH7; ubiquitin-protein ligase L3; ubiquitin carrier protein L3; ubiquitin-conjugating enzyme E2-F1; ubiquitin-conjugating enzyme UBCH7; E2-F1; L-UBC; UbcM4;
Gene ID	7332
mRNA Refseq	NM_003347
Protein Refseq	NP_003338
MIM	603721
UniProt ID	P68036

 Tel: 1-631-559-9269 1-516-512-3133

 Email: info@creative-biomart.com  Fax: 1-631-938-8127

 45-1 Ramsey Road, Shirley, NY 11967, USA

SDS-PAGE



 Tel: 1-631-559-9269 1-516-512-3133

 Email: info@creative-biomart.com  Fax: 1-631-938-8127

 45-1 Ramsey Road, Shirley, NY 11967, USA