

Recombinant Human UBE2L3 Protein (Ser4-Asp154), N-His tagged

Cat. No. UBE2L3-6533H **Lot. No.** (See product label)

SPECIFICATION

Product Overview	Recombinant human UBE2L3 (Ser4-Asp154) fused with the N-His tag was expressed in E. coli.
Species	Human
Source	E.coli
ProteinLength	Ser4-Asp154
Form	Lyophilized powder/frozen liquid
Molecular Mass	19.90 kDa
Purity	> 90 % as determined by SDS-PAGE
Notes	For research use only.
Storage	Use a manual defrost freezer and avoid repeated freeze thaw cycles. Store at 2 to 8 centigrade for one week. Store at -20 to -80 centigrade for twelve months from the date of receipt.
Storage Buffer	0.01M PBS, pH 7.4, 0.02 % NLS
Reconstitution	Reconstitute in sterile water for a stock solution.

 Tel: 1-631-559-9269 1-516-512-3133

 Email: info@creative-biomart.com  Fax: 1-631-938-8127

 45-1 Ramsey Road, Shirley, NY 11967, USA

Shipping They are shipped out with dry ice/blue ice unless customers require otherwise.

GENE INFORMATION

Gene Name UBE2L3 ubiquitin-conjugating enzyme E2L 3 [Homo sapiens (human)]

Official Symbol UBE2L3

Synonyms UBE2L3; ubiquitin-conjugating enzyme E2L 3; ubiquitin-conjugating enzyme E2 L3; UBCH7; ubiquitin-protein ligase L3; ubiquitin carrier protein L3; ubiquitin-conjugating enzyme E2-F1; ubiquitin-conjugating enzyme UBCH7; E2-F1; L-UBC; UbcM4;

Gene ID 7332

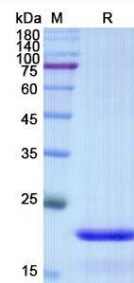
mRNA Refseq NM_001256355

Protein Refseq NP_001243284

MIM 603721

UniProt ID P68036

SDS-PAGE



 Tel: 1-631-559-9269 1-516-512-3133

 Email: info@creative-biomart.com  Fax: 1-631-938-8127

 45-1 Ramsey Road, Shirley, NY 11967, USA