

# Recombinant Human UBE2L6 Protein, MYC/DDK-tagged, C13 and N15-labeled

Cat. No. UBE2L6-145H Lot. No. (See product label)

## SPECIFICATION

<b>Product Overview</b>	UBE2L6 MS Standard C13 and N15-labeled recombinant protein (NP_004214) with a C-terminal MYC/DDK tag, was expressed in HEK293 cells.
<b>Species</b>	Human
<b>Source</b>	HEK293
<b>Description</b>	The modification of proteins with ubiquitin is an important cellular mechanism for targeting abnormal or short-lived proteins for degradation. Ubiquitination involves at least three classes of enzymes: ubiquitin-activating enzymes (E1s), ubiquitin-conjugating enzymes (E2s) and ubiquitin-protein ligases (E3s). This gene encodes a member of the E2 ubiquitin-conjugating enzyme family. This enzyme is highly similar in primary structure to the enzyme encoded by the UBE2L3 gene. Two alternatively spliced transcript variants encoding distinct isoforms have been found for this gene.
<b>Molecular Mass</b>	17.6 kDa
<b>AA Sequence</b>	MMASMRVVKELEDLQKKPPPYLRNLSSDDANVLVWHALLLPDQPPYHLKAFNLRIS FPPEYPFKPPMIKFTTKIYHPNVDENGQICLPIISSENWKPCTKTCQVLEALNVLVNRP NIREPLRMDLADLLTQNPFLFRKNAEEFTLRFVDRPSTRTRPLEQKLISEEDLAAND ILDYKDDDDKV
<b>Purity</b>	> 80% as determined by SDS-PAGE and Coomassie blue staining

 Tel: 1-631-559-9269 1-516-512-3133

 Email: [info@creative-biomart.com](mailto:info@creative-biomart.com)  Fax: 1-631-938-8127

 45-1 Ramsey Road, Shirley, NY 11967, USA

<b>Stability</b>	Stable for 3 months from receipt of products under proper storage and handling conditions.
<b>Storage</b>	Store at -80 centigrade. Avoid repeated freeze-thaw cycles.
<b>Concentration</b>	50 µg/mL as determined by BCA
<b>Storage Buffer</b>	100 mM glycine, 25 mM Tris-HCl, pH 7.3.

## GENE INFORMATION

<b>Gene Name</b>	UBE2L6 ubiquitin conjugating enzyme E2 L6 [ Homo sapiens (human) ]
<b>Official Symbol</b>	UBE2L6
<b>Synonyms</b>	UBE2L6; ubiquitin conjugating enzyme E2 L6; RIG-B; UBCH8; ubiquitin/ISG15-conjugating enzyme E2 L6; E2 ubiquitin-conjugating enzyme L6; retinoic acid induced gene B protein; ubiquitin carrier protein L6; ubiquitin conjugating enzyme E2L 6; ubiquitin-protein ligase L6; EC 2.3.2.23
<b>Gene ID</b>	9246
<b>mRNA Refseq</b>	NM_004223
<b>Protein Refseq</b>	NP_004214
<b>MIM</b>	603890
<b>UniProt ID</b>	O14933

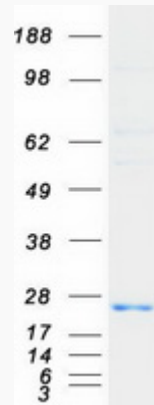
 Tel: 1-631-559-9269 1-516-512-3133

 Email: [info@creative-biomart.com](mailto:info@creative-biomart.com)  Fax: 1-631-938-8127

 45-1 Ramsey Road, Shirley, NY 11967, USA



SDS-PAGE



Tel: 1-631-559-9269 1-516-512-3133

Email: [info@creative-biomart.com](mailto:info@creative-biomart.com) Fax: 1-631-938-8127

45-1 Ramsey Road, Shirley, NY 11967, USA