

## Recombinant Full Length Human UBE2N, N His-tagged

Cat. No. UBE2N-62H Lot. No. (See product label)

### SPECIFICATION

<b>Product Overview</b>	Recombinant human UBE2N protein, fused to His-tag at N-terminus, was expressed in E.coli and purified by using conventional chromatography.
<b>Species</b>	Human
<b>Source</b>	E.coli
<b>ProteinLength</b>	1-152 a.a.
<b>Description</b>	UBE2N, also known as UBC13, is a member of the E2 ubiquitin-conjugating enzyme family. It catalyzes the ATP-dependent synthesis of non-canonical polyubiquitin chains, a process that does not lead to proteasomal degradation. It mediates the transcription of several target genes and is thought to play a role in cell cycle progression; cellular differentiation and DNA repair mechanisms that ensure cell survival after DNA damage.
<b>Form</b>	Liquid. 20mM Tris-HCl buffer (pH8.0) containing 20% glycerol, 0.1M NaCl, 1mM DTT
<b>Molecular Weight</b>	19.3 kDa(172aa), confirmed by MALDI-TOF
<b>Purity</b>	> 95% by SDS - PAGE
<b>Concentration</b>	0.5 mg/ml (determined by Bradford assay)
<b>Sequences of amino</b>	MGSSHHHHHH SGLVPRGSH MAGLPRIIK ETQRLLAEPV PGIKAEPDES

 Tel: 1-631-559-9269 1-516-512-3133

 Email: [info@creative-biomart.com](mailto:info@creative-biomart.com)  Fax: 1-631-938-8127

 45-1 Ramsey Road, Shirley, NY 11967, USA

**acids** NARYFHVVIA GPQDSPFEGG TFKLELFLPE EYPMAAPKVRFMTKIYHPNV  
DKLGRICLDI LKDKWSPALQ IRTVLLSIQA LLSAPNPDDP LANDVAEQWK  
TNEAQAIETA RAWTRLYAMN NI

**Storage** Can be stored at +4°C short term (1-2 weeks). For long term storage, aliquot and store at -20°C or -70°C. Avoid repeated freezing and thawing cycles.

## GENE INFORMATION

**Gene Name** UBE2N ubiquitin-conjugating enzyme E2N (UBC13 homolog, yeast) [ Homo sapiens ]

**Synonyms** ubiquitin-conjugating enzyme E2N (UBC13 homolog, yeast); UBC13; MGC8489; UbcH-ben; MGC131857; UBE2N; ubiquitin-conjugating enzyme E2 N; yeast UBC13 homolog; ubiquitin-protein ligase N; ubiquitin carrier protein N; bendless-like ubiquitin conjugating enzyme; ubiquitin-conjugating enzyme E2N (homologous to yeast UBC13); bendless-like ubiquitin-conjugating enzyme; EC=6.3.2.19

**Gene ID** 7334

**mRNA Refseq** NM\_003348

**Protein Refseq** NP\_003339

**MIM** 603679

**UniProt ID** P61088

**Chromosome Location** 12q22

**Function** ATP binding; ligase activity; nucleotide binding; protein binding; ubiquitin binding;

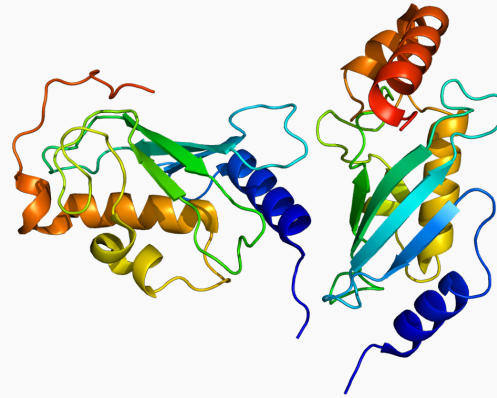
 Tel: 1-631-559-9269 1-516-512-3133

 Email: [info@creative-biomart.com](mailto:info@creative-biomart.com)  Fax: 1-631-938-8127

 45-1 Ramsey Road, Shirley, NY 11967, USA



ubiquitin-protein ligase activity



Tel: 1-631-559-9269 1-516-512-3133

Email: [info@creative-biomart.com](mailto:info@creative-biomart.com) Fax: 1-631-938-8127

45-1 Ramsey Road, Shirley, NY 11967, USA