

## Active Recombinant Human UBE2O Protein, GST-tagged

Cat. No. UBE2O-651H Lot. No. (See product label)

### SPECIFICATION

<b>Product Overview</b>	Recombinant Human UBE2O fused with GST tag at N-terminal was expressed in Insect cells.
<b>Species</b>	Human
<b>Source</b>	Insect Cells
<b>Description</b>	UBE2O or ubiquitin-conjugating enzyme E2O is a part of the ubiquitin-mediated protein degradation pathway in which a thiol-ester linkage forms between a conserved cysteine and the C-terminus of ubiquitin and complexes with ubiquitin. HIV-1 Tat has been identified to have a physical interaction with ubiquitin-conjugating enzyme E2O (UBE2O) in human HEK293 and Jurkat cell lines by using affinity tagging and purification mass spectrometry analyses.
<b>Form</b>	50mM Tris-HCl, pH 7.5, 150mM NaCl, 10mM glutathione, 0.1mM EDTA, 0.25mM DTT, 0.1mM PMSF, 25% glycerol
<b>Bio-activity</b>	25 nmol/min/mg
<b>Molecular Mass</b>	106 kDa
<b>Purity</b>	>95%
<b>Applications</b>	Ubiquitin Enzyme Assay, Western Blot

 Tel: 1-631-559-9269 1-516-512-3133

 Email: [info@creative-biomart.com](mailto:info@creative-biomart.com)  Fax: 1-631-938-8127

 45-1 Ramsey Road, Shirley, NY 11967, USA

<b>Stability</b>	1 year at - 70 centigrade from the date of shipment.
<b>Storage</b>	Store product at –70 centigrade. For optimal storage, aliquot target into smaller quantities after centrifugation and store at recommended temperature. For most favorable performance, avoid repeated handling and multiple freeze/thaw cycles.
<b>Concentration</b>	0.1 ug/ml

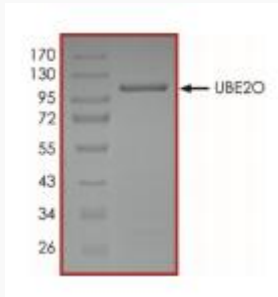
## GENE INFORMATION

<b>Gene Name</b>	UBE2O ubiquitin-conjugating enzyme E2O [ Homo sapiens ]
<b>Official Symbol</b>	UBE2O
<b>Synonyms</b>	UBE2O; ubiquitin-conjugating enzyme E2O; ubiquitin-conjugating enzyme E2 O; E2 230K; ubiquitin-protein ligase O; ubiquitin carrier protein O; ubiquitin-conjugating enzyme E2-230K; ubiquitin-conjugating enzyme E2 of 230 kDa; E2-230K; FLJ12878; KIAA1734;
<b>Gene ID</b>	63893
<b>mRNA Refseq</b>	NM_022066
<b>Protein Refseq</b>	NP_071349
<b>UniProt ID</b>	Q9C0C9

 Tel: 1-631-559-9269 1-516-512-3133

 Email: [info@creative-biomart.com](mailto:info@creative-biomart.com)  Fax: 1-631-938-8127

 45-1 Ramsey Road, Shirley, NY 11967, USA



Tel: 1-631-559-9269 1-516-512-3133

Email: [info@creative-biomart.com](mailto:info@creative-biomart.com) Fax: 1-631-938-8127

45-1 Ramsey Road, Shirley, NY 11967, USA