

# Recombinant Human UBE2Q2 Protein, Myc/DDK-tagged, C13 and N15-labeled

**Cat. No.** UBE2Q2-2529H    **Lot. No.** (See product label)

## SPECIFICATION

<b>Product Overview</b>	UBE2Q2 MS Standard C13 and N15-labeled recombinant protein (NP_775740) with a C-terminal MYC/DDK tag, was expressed in HEK293 cells.
<b>Species</b>	Human
<b>Source</b>	HEK293
<b>Description</b>	Accepts ubiquitin from the E1 complex and catalyzes its covalent attachment to other proteins. In vitro catalyzes 'Lys-48'-linked polyubiquitination.
<b>Molecular Mass</b>	42.6 kDa
<b>AA Sequence</b>	MSVSGLKAEKFLASIFDKNHERFRIVSWKLDLHCQFLVPQQGSPHSLPPPLTLHC NITESYPSSSPIWVFDSEDPNLTSVLERLEDTKNNLLRQQLKWLICELCSLYNLPKH LDVEMLDQPLPTGQNGTTEEVTSSEEEEEEEEMAEDIEDLDHYEMKEEPIISGKKSE DEGIEKENLAILEKIRKTQRQDHLNGAVSGSVQASDRMLKELRDIYRSQSYKTGIYSV ELINDSLYDWHVKLQKVDPSPLHSDLQILKEKEGIEYILLNFSFKDNFPDPPFVRVV LPVLSGGYVLGGGALCMELLTKQGWSSAYSIESVIMQINATLVK GKARVQFGANKN QYNLARAQQSYNSIVQIHEKNGWYTPPKEDGTRTRPLEQKLISEEDLAANDILDYKD DDDKV
<b>Purity</b>	> 80% as determined by SDS-PAGE and Coomassie blue staining
<b>Stability</b>	Stable for 3 months from receipt of products under proper storage and handling

 Tel: 1-631-559-9269    1-516-512-3133

 Email: [info@creative-biomart.com](mailto:info@creative-biomart.com)     Fax: 1-631-938-8127

 45-1 Ramsey Road, Shirley, NY 11967, USA

conditions.

**Storage** Store at -80 centigrade. Avoid repeated freeze-thaw cycles.

**Concentration** 50 µg/mL as determined by BCA

**Storage Buffer** 100 mM glycine, 25 mM Tris-HCl, pH 7.3.

## GENE INFORMATION

**Gene Name** UBE2Q2 ubiquitin-conjugating enzyme E2Q family member 2 [ Homo sapiens (human) ]

**Official Symbol** UBE2Q2

**Synonyms** UBE2Q2; ubiquitin-conjugating enzyme E2Q family member 2; ubiquitin conjugating enzyme E2Q (putative) 2; ubiquitin-conjugating enzyme E2 Q2; DKFZp762C143; ubiquitin-protein ligase Q2; ubiquitin carrier protein Q2;

**Gene ID** 92912

**mRNA Refseq** NM\_173469

**Protein Refseq** NP\_775740

**MIM** 612501

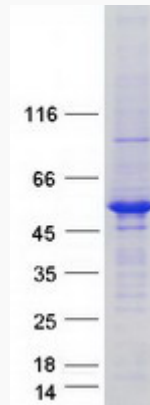
**UniProt ID** Q8WVN8

 Tel: 1-631-559-9269 1-516-512-3133

 Email: [info@creative-biomart.com](mailto:info@creative-biomart.com)  Fax: 1-631-938-8127

 45-1 Ramsey Road, Shirley, NY 11967, USA

**SDS-PAGE**



 Tel: 1-631-559-9269 1-516-512-3133

 Email: [info@creative-biomart.com](mailto:info@creative-biomart.com)  Fax: 1-631-938-8127

 45-1 Ramsey Road, Shirley, NY 11967, USA