

## Recombinant Human UBE2S protein, His-tagged

Cat. No. UBE2S-4120H Lot. No. (See product label)

### SPECIFICATION

<b>Product Overview</b>	Recombinant Human UBE2S protein(Q16763)(237aa), fused with N-terminal His tag, was expressed in E. coli.
<b>Species</b>	Human
<b>Source</b>	E.coli
<b>Protein Length</b>	237aa(including fusion tag)
<b>Tag</b>	N-His
<b>Form</b>	20mM Tris.Cl, 50mM NaCl, 50% Glycerol, pH8.0.
<b>Molecular Mass</b>	25.8kDa(including fusion tag)
<b>Storage</b>	Store at -80°C and avoid repeated freeze-thaw cycles.
<b>Reconstitution</b>	It is recommended that sterile water be added to the vial to prepare a stock solution of 0.2 ug/ul. Centrifuge the vial at 4°C before opening to recover the entire contents.

### GENE INFORMATION

<b>Gene Name</b>	UBE2S ubiquitin-conjugating enzyme E2S [ Homo sapiens ]
<b>Official Symbol</b>	UBE2S

 Tel: 1-631-559-9269 1-516-512-3133

 Email: [info@creative-biomart.com](mailto:info@creative-biomart.com)  Fax: 1-631-938-8127

 45-1 Ramsey Road, Shirley, NY 11967, USA

**Synonyms** UBE2S; ubiquitin-conjugating enzyme E2S; ubiquitin-conjugating enzyme E2 S; E2 EPF; ubiquitin carrier protein; ubiquitin conjugating enzyme E2 24 kD; ubiquitin protein ligase; E2-EPF5; ubiquitin-protein ligase S; ubiquitin carrier protein S; ubiquitin-conjugating enzyme E2-EPF5; ubiquitin-conjugating enzyme E2-24 kD; ubiquitin-conjugating enzyme E2-24 kDa; EPF5; E2EPF; E2-EPF;

**Gene ID** [27338](#)

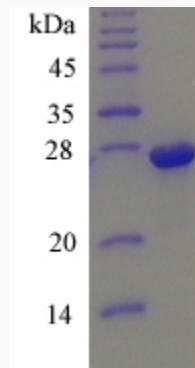
**mRNA Refseq** [NM\\_014501](#)

**Protein Refseq** [NP\\_055316](#)

**MIM** [610309](#)

**UniProt ID** [Q16763](#)

**SDS-PAGE**



 Tel: 1-631-559-9269 1-516-512-3133

 Email: [info@creative-biomart.com](mailto:info@creative-biomart.com)  Fax: 1-631-938-8127

 45-1 Ramsey Road, Shirley, NY 11967, USA