

## Recombinant Human UBE2S Protein (Met1-Ala209), N-His tagged

Cat. No. UBE2S-5817H Lot. No. (See product label)

### SPECIFICATION

<b>Product Overview</b>	Recombinant human UBE2S (Met1-Ala209) fused with the N-His tag was expressed in E. coli.
<b>Species</b>	Human
<b>Source</b>	E.coli
<b>ProteinLength</b>	Met1-Ala209
<b>Form</b>	Lyophilized powder/frozen liquid
<b>Molecular Mass</b>	24.53 kDa
<b>Purity</b>	> 90 % as determined by SDS-PAGE
<b>Notes</b>	For research use only.
<b>Storage</b>	Use a manual defrost freezer and avoid repeated freeze thaw cycles. Store at 2 to 8 centigrade for one week. Store at -20 to -80 centigrade for twelve months from the date of receipt.
<b>Storage Buffer</b>	0.01M PBS, pH 7.4, 0.02 % NLS
<b>Reconstitution</b>	Reconstitute in sterile water for a stock solution.

 Tel: 1-631-559-9269 1-516-512-3133

 Email: [info@creative-biomart.com](mailto:info@creative-biomart.com)  Fax: 1-631-938-8127

 45-1 Ramsey Road, Shirley, NY 11967, USA

**Shipping** They are shipped out with dry ice/blue ice unless customers require otherwise.

## GENE INFORMATION

**Gene Name** UBE2S ubiquitin-conjugating enzyme E2S [ Homo sapiens (human) ]

**Official Symbol** UBE2S

**Synonyms** UBE2S; ubiquitin-conjugating enzyme E2S; ubiquitin-conjugating enzyme E2 S; E2 EPF; ubiquitin carrier protein; ubiquitin conjugating enzyme E2 24 kD; ubiquitin protein ligase; E2-EPF5; ubiquitin-protein ligase S; ubiquitin carrier protein S; ubiquitin-conjugating enzyme E2-EPF5; ubiquitin-conjugating enzyme E2-24 kD; ubiquitin-conjugating enzyme E2-24 kDa; EPF5; E2EPF; E2-EPF;

**Gene ID** 27338

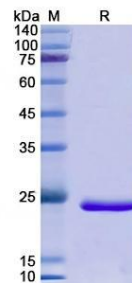
**mRNA Refseq** NM\_014501

**Protein Refseq** NP\_055316

**MIM** 610309

**UniProt ID** Q16763

### SDS-PAGE



 Tel: 1-631-559-9269 1-516-512-3133

 Email: [info@creative-biomart.com](mailto:info@creative-biomart.com)  Fax: 1-631-938-8127

 45-1 Ramsey Road, Shirley, NY 11967, USA