

Recombinant Full Length Human UBE2T Protein, C-Flag-tagged

Cat. No. UBE2T-1041HFL **Lot. No.** (See product label)

SPECIFICATION

Product Overview	Recombinant Full Length Human UBE2T Protein, fused to Flag-tag at C-terminus, was expressed in Mammalian cells.
Species	Human
Source	Mammalian Cells
Description	The protein encoded by this gene catalyzes the covalent attachment of ubiquitin to protein substrates. Defects in this gene have been associated with Fanconi anemia of complementation group T. Two transcript variants encoding different isoforms have been found for this gene.
Form	25 mM Tris HCl, pH 7.3, 100 mM glycine, 10% glycerol.
Molecular Mass	22.3 kDa
AA Sequence	MQRASRLKRELHMLATEPPPGITCWQDKDQMDDLRAQILGGANTPYEKGVFKLEVII PERYPFEPPQIRF LTPIYHPNIDSAGRICLDVLKLPKGAWRPSLNIATVLTSLQLLMS EPNPDDPLMADISSEFKYNKPAFL KNARQWTEKHARQKQKADEEEMLDNLPEAGDSRVHNSTQKRKASQLVGIEKKFHP DV TRTRPLEQKLISEEDLAANDILDYKDDDDKV
Purity	> 80% as determined by SDS-PAGE and Coomassie blue staining.

 Tel: 1-631-559-9269 1-516-512-3133

 Email: info@creative-biomart.com  Fax: 1-631-938-8127

 45-1 Ramsey Road, Shirley, NY 11967, USA

Stability	Stable for 12 months from the date of receipt of the product under proper storage and handling conditions. Avoid repeated freeze-thaw cycles.
Storage	Store at -80 centigrade.
Concentration	>50 ug/mL as determined by microplate BCA method.
Preparation	Recombinant protein was captured through anti-DDK affinity column followed by conventional chromatography steps.
Protein Families	Druggable Genome
Full Length	Full L.

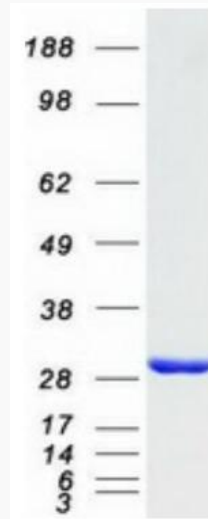
GENE INFORMATION

Gene Name	UBE2T ubiquitin conjugating enzyme E2 T [Homo sapiens (human)]
Official Symbol	UBE2T
Synonyms	FANCT; PIG50; HSPC150
Gene ID	29089
mRNA Refseq	NM_014176.4
Protein Refseq	NP_054895.1
MIM	610538
UniProt ID	Q9NPD8

 Tel: 1-631-559-9269 1-516-512-3133

 Email: info@creative-biomart.com  Fax: 1-631-938-8127

 45-1 Ramsey Road, Shirley, NY 11967, USA



Coomassie blue staining of purified UBE2T protein.

 Tel: 1-631-559-9269 1-516-512-3133

 Email: info@creative-biomart.com  Fax: 1-631-938-8127

 45-1 Ramsey Road, Shirley, NY 11967, USA