

Recombinant Full Length Human UBE2V1 Protein, C-Flag-tagged

Cat. No. UBE2V1-819HFL **Lot. No.** (See product label)

SPECIFICATION

Product Overview	Recombinant Full Length Human UBE2V1 Protein, fused to Flag-tag at C-terminus, was expressed in Mammalian cells.
Species	Human
Source	Mammalian Cells
Description	Ubiquitin-conjugating E2 enzyme variant proteins constitute a distinct subfamily within the E2 protein family. They have sequence similarity to other ubiquitin-conjugating enzymes but lack the conserved cysteine residue that is critical for the catalytic activity of E2s. The protein encoded by this gene is located in the nucleus and can cause transcriptional activation of the human FOS proto-oncogene. It is thought to be involved in the control of differentiation by altering cell cycle behavior. Alternatively spliced transcript variants encoding multiple isoforms have been described for this gene, and multiple pseudogenes of this gene have been identified. Co-transcription of this gene and the neighboring upstream gene generates a rare transcript (Kua-UEV), which encodes a fusion protein comprised of sequence sharing identity with each individual gene product.
Form	25 mM Tris HCl, pH 7.3, 100 mM glycine, 10% glycerol.
Molecular Mass	42 kDa
AA Sequence	MAGAEDWPGQQLLEDEDEASCCRWGAQHAGARELAALYSPGKRLQEWCSVILCF

 Tel: 1-631-559-9269 1-516-512-3133

 Email: info@creative-biomart.com  Fax: 1-631-938-8127

 45-1 Ramsey Road, Shirley, NY 11967, USA



SLIAHNLVHLLLLARW EDTPLVILGVVAGALIADFLSGLVHWGADTWGSVELPIVGKA
 FIRPFREHHIDPTAIRHDFIETNGDNC LVTLLPLLNMAYKFRTHSPEALEQLYPWEC
 FVFLIIFGTFTNQIHKWSHTYFGLPRWVTLLQDWHVILP RKHHRIIHVSPHETYFCI
 TTGVKVPNRNFRLLLEELEGQKGVGDGTVSWGLEDDEDMTLTRWTGMIIGPPR TIYE
 NRIYSLKIECGPKYPEAPPFVRFVTKINMNGVNSSNGVVDPRAISVLAKWQNSYSIKV
 VLQELRRL
 MMSKENMKLPQPPEGQCYSNTRTRPLEQKLISEEDLAANDILDYKDDDDKV

Purity	> 80% as determined by SDS-PAGE and Coomassie blue staining.
Stability	Stable for 12 months from the date of receipt of the product under proper storage and handling conditions. Avoid repeated freeze-thaw cycles.
Storage	Store at -80 centigrade.
Concentration	>50 ug/mL as determined by microplate BCA method.
Preparation	Recombinant protein was captured through anti-DDK affinity column followed by conventional chromatography steps.
Protein Families	Transmembrane
Full Length	Full L.

GENE INFORMATION

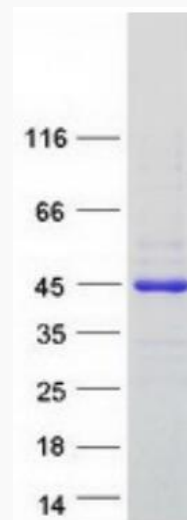
Gene Name	UBE2V1 ubiquitin conjugating enzyme E2 V1 [Homo sapiens (human)]
Official Symbol	UBE2V1
Synonyms	CIR1; UEV1; CROC1; UBE2V; UEV-1; UEV1A; CROC-1

Tel: 1-631-559-9269 1-516-512-3133

Email: info@creative-biomart.com Fax: 1-631-938-8127

45-1 Ramsey Road, Shirley, NY 11967, USA

Gene ID	7335
mRNA Refseq	NM_199144.3
Protein Refseq	NP_954595.1
MIM	602995
UniProt ID	Q13404



Coomassie blue staining of purified TMEM189-UBE2V1 protein.

Tel: 1-631-559-9269 1-516-512-3133

Email: info@creative-biomart.com Fax: 1-631-938-8127

45-1 Ramsey Road, Shirley, NY 11967, USA