

Recombinant Human UBE2V2, His-tagged

Cat. No. UBE2V2-60H Lot. No. (See product label)

SPECIFICATION

Product Overview	Recombinant human UBE2V2 protein, fused to His-tag at N-terminus, was expressed in <i>E.coli</i> and purified by using conventional chromatography techniques. MW =18.5 kDa (165aa) confirmed by MALDI-TOF.
Species	Human
Source	E.coli
ProteinLength	1-145 aa
Description	UBE2V2, also known as ubiquitin-conjugating enzyme E2 variant 2, constitutes a distinct subfamily within the E2 protein family. They have sequence similarity to other ubiquitin-conjugating enzymes but lack the conserved cysteine residue that is critical for the catalytic activity of E2s. This protein also shares homology with ubiquitin-conjugating enzyme E2 variant 1 and yeast MMS2 gene product. It may be involved in the differentiation of monocytes and enterocytes.
Sequences Of Amino Acids	MGSSHHHHHH SSSLVPRGSH MAVSTGVKVP RNFRLLEELE EGQKGVGDGT VSWGLEDDED MTLTRWTGMI IGPPRTNYEN RIYSLKVECG PKYPEAPPSV RFVTKINMNG INNSSGMVDA RSIPVLAKWQ NSYSIKVVLQ ELRRLMMSKE NMKLPQPPEG QTYNN
Purity	> 95% by SDS – PAGE.
Form	Liquid. 20mM Tris-HCl buffer (pH8.0) containing 10% glycerol 0.1M NaCl.

 Tel: 1-631-559-9269 1-516-512-3133

 Email: info@creative-biomart.com  Fax: 1-631-938-8127

 45-1 Ramsey Road, Shirley, NY 11967, USA

Concentration 0.5 mg/ml (determined by Bradford assay).

Storage Can be stored at +4°C short term (1-2 weeks). For long term storage, aliquot and store at -20°C or -70°C. Avoid repeated freezing and thawing cycles.

GENE INFORMATION

Gene Name UBE2V2 ubiquitin-conjugating enzyme E2 variant 2 [Homo sapiens]

Synonyms UBE2V2; ubiquitin-conjugating enzyme E2 variant 2; MMS2; UEV2; EDPF1; UEV-2; DDVIT1; EDAF-1; EDPF-1; DDVit-1; DDVit 1; MMS2 homolog; vitamin D3-inducible protein; 1 alpha,25-dihydroxyvitamin D3-inducible; enterocyte differentiation promoting factor; enterocyte differentiation-promoting factor 1; enterocyte differentiation-associated factor 1; enterocyte differentiation-associated factor EDAF-1; methyl methanesulfonate sensitive 2, S. cerevisiae, homolog of; ubiquitin-conjugating enzyme E2v2; enterocyte differentiation promoting factor

Gene ID 7336

mRNA Refseq NM_003350

Protein Refseq NP_003341

MIM 603001

UniProt ID Q15819

Chromosome Location 8q11.21

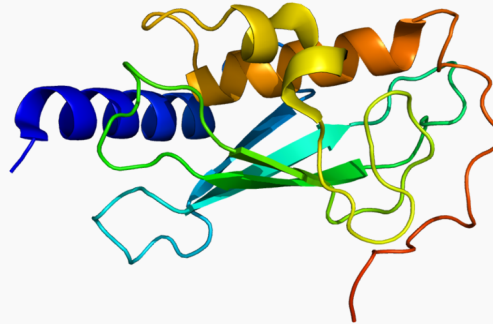
Function protein binding; small conjugating protein ligase activity

 Tel: 1-631-559-9269 1-516-512-3133

 Email: info@creative-biomart.com  Fax: 1-631-938-8127

 45-1 Ramsey Road, Shirley, NY 11967, USA

PDB rendering based
on 1j74.



 Tel: 1-631-559-9269 1-516-512-3133

 Email: info@creative-biomart.com  Fax: 1-631-938-8127

 45-1 Ramsey Road, Shirley, NY 11967, USA