

Recombinant Human UBE3A protein, GST-tagged

Cat. No. UBE3A-1251H Lot. No. (See product label)

SPECIFICATION

Product Overview	Recombinant Human UBE3A protein, fused with GST tag, was expressed in E. coli.
Species	Human
Source	E.coli
Form	20 mM Tris, 150 mM NaCl, 2 mM βME, 10% Glycerol
Purity	~90% by SDS-PAGE
Storage	This product is stable at ≤ -70°C for up to 6 months from the date of receipt. For optimal storage, aliquot into smaller quantities after centrifugation and store at recommended temperature.

GENE INFORMATION

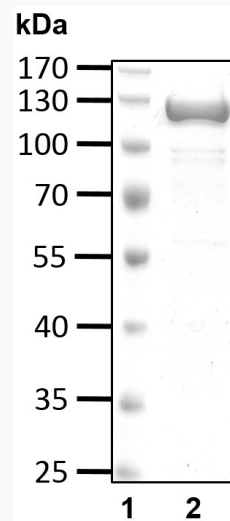
Gene Name	UBE3A ubiquitin protein ligase E3A [Homo sapiens]
Official Symbol	UBE3A
Synonyms	UBE3A; ubiquitin protein ligase E3A; EPVE6AP, HPVE6A, human papilloma virus E6 associated protein; ubiquitin-protein ligase E3A; ANCR; Angelman syndrome; AS; E6 AP; FLJ26981; CTCL tumor antigen se37-2; E6AP ubiquitin-protein ligase; renal carcinoma antigen NY-REN-54; human papillomavirus E6-associated protein; oncogenic protein-associated protein E6-AP; human papilloma virus E6-associated

 Tel: 1-631-559-9269 1-516-512-3133

 Email: info@creative-biomart.com  Fax: 1-631-938-8127

 45-1 Ramsey Road, Shirley, NY 11967, USA

protein; E6-AP; HPVE6A; EPVE6AP;

Gene ID [7337](#)**mRNA Refseq** [NM_000462](#)**Protein Refseq** [NP_000453](#)**MIM** [601623](#)**UniProt ID** [Q05086](#)**SDS-PAGE** Tel: 1-631-559-9269 1-516-512-3133 Email: info@creative-biomart.com  Fax: 1-631-938-8127 45-1 Ramsey Road, Shirley, NY 11967, USA